

For Research Use Only

PTPN1 Recombinant antibody, PBS Only (Detector)

Catalog Number: 85905-2-PBS



Basic Information

Catalog Number: 85905-2-PBS	GenBank Accession Number: BC015660	Purification Method: Protein A purification
Size: 100ug, Concentration: 1 mg/ml by Nanodrop;	GeneID (NCBI): 5770	CloneNo.: 250215E9
Source: Rabbit	UNIPROT ID: P18031	
Isotype: IgG	Full Name: protein tyrosine phosphatase, non-receptor type 1	
Immunogen Catalog Number: AG1878	Calculated MW: 435 aa, 50 kDa	

Applications

Tested Applications:
Cytometric bead array, Indirect ELISA, Sample test

Species Specificity:
human

Product Information

85905-2-PBS targets PTPN1 as part of a matched antibody pair.

MP02199-1: 85905-1-PBS capture and 85905-2-PBS detection (validated in Cytometric bead array)

Unconjugated rabbit recombinant monoclonal antibody in PBS only (BSA and azide free) storage buffer at a concentration of 1 mg/mL, ready for conjugation. Created using Proteintech's proprietary in-house recombinant technology. Recombinant production enables unrivalled batch-to-batch consistency, easy scale-up, and future security of supply.

This conjugation ready format makes antibodies ideal for use in many applications including: ELISAs, multiplex assays requiring matched pairs, mass cytometry, and multiplex imaging applications. Antibody use should be optimized by the end user for each application and assay.

Storage

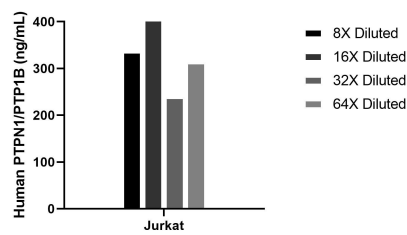
Storage:
Store at -80°C.

Storage Buffer:
PBS only, pH7.3

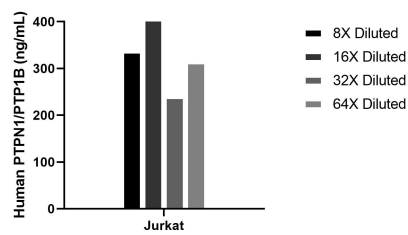
For technical support and original validation data for this product please contact:
T: 1 (888) 4PTGLAB (1-888-478-4522) (toll free in USA), or 1(312) 455-8498 (outside USA)
E: proteintech@ptglab.com
W: ptglab.com

This product is exclusively available under Proteintech Group brand and is not available to purchase from any other manufacturer.

Selected Validation Data



The mean PTPN1/PTP1B concentration was determined to be 330.3 ng/mL in Jurkat cell extract based on a 1.9 mg/mL extract load.



Cytometric bead array standard curve of MP02199-1, PTPN1/PTP1B Recombinant Matched Antibody Pair, PBS Only. Capture antibody: 85905-1-PBS. Detection antibody: 85905-2-PBS. Standard: Ag1878. Range: 0.781-100 ng/mL.