

For Research Use Only

# PTPN1/PTP1B Recombinant antibody

Catalog Number: 85905-4-RR



## Basic Information

<b>Catalog Number:</b> 85905-4-RR	<b>GenBank Accession Number:</b> BC015660	<b>Purification Method:</b> Protein A purification
<b>Size:</b> 100ul , Concentration: 1000 µg/ml by Nanodrop;	<b>GeneID (NCBI):</b> 5770	<b>CloneNo.:</b> 250215G6
<b>Source:</b> Rabbit	<b>UNIPROT ID:</b> P18031	<b>Recommended Dilutions:</b> WB 1:5000-1:50000 IF/ICC 1:250-1:1000
<b>Isotype:</b> IgG	<b>Full Name:</b> protein tyrosine phosphatase, non-receptor type 1	
<b>Immunogen Catalog Number:</b> AG1878	<b>Calculated MW:</b> 435 aa, 50 kDa	
	<b>Observed MW:</b> 50 kDa	

## Applications

<b>Tested Applications:</b> WB, IF/ICC, ELISA	<b>Positive Controls:</b>
<b>Species Specificity:</b> human	<b>WB :</b> HepG2 cells, HeLa cells, Jurkat cells, THP-1 cells <b>IF/ICC :</b> HeLa cells,

## Background Information

PTPN1 (protein tyrosine phosphatase, non-receptor type 1) is also named as PTP1B or PTP-1B, and belongs to the protein-tyrosine phosphatase family and non-receptor class 1 subfamily. PTPN1 is involved in the regulation of several important physiological pathways, which regulates both INS and leptin signaling, and interacts with the epidermal-and platelet-derived growth factor receptors (PMID: 20101100). The gene might harbor variants influencing susceptibility to INS resistance and type 2 diabetes (PMID:15919813). The molecular mass of PTPN1 is 50 kDa, but sometimes some truncated forms can be detected as 48, 46, 39, 37 kDa due to non-specific proteolytic cleavage of PTP1B in different cells (PMID: 18253097).

## Storage

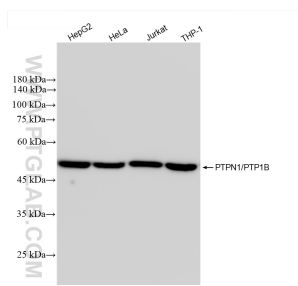
**Storage:**  
Store at -20°C. Stable for one year after shipment.  
**Storage Buffer:**  
PBS with 0.02% sodium azide and 50% glycerol, pH7.3  
**Aliquoting is unnecessary for -20°C storage**

\*\*\* 20ul sizes contain 0.1% BSA

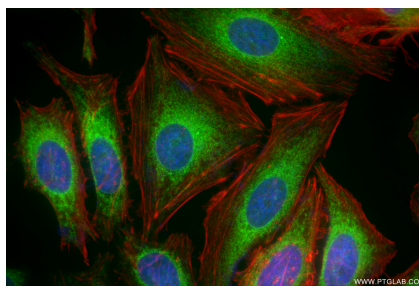
For technical support and original validation data for this product please contact:  
T: 1 (888) 4PTGLAB (1-888-478-4522) (toll free in USA), or 1(312) 455-8498 (outside USA)  
E: proteintech@ptglab.com  
W: ptglab.com

This product is exclusively available under Proteintech Group brand and is not available to purchase from any other manufacturer.

## Selected Validation Data



Various lysates were subjected to SDS PAGE followed by western blot with 85905-4-RR (PTPN1 antibody) at dilution of 1:10000 incubated at room temperature for 1.5 hours.



Immunofluorescent analysis of (4% PFA) fixed HeLa cells using PTPN1 antibody (85905-4-RR, Clone: 250215G6) at dilution of 1:500 and CoraLite® 488-Conjugated Goat Anti-Rabbit IgG(H+L) (SA00013-2), CL594-Phalloidin (red).