

For Research Use Only

SPARCL1 Recombinant antibody, PBS Only (Capture)

Catalog Number: 85906-3-PBS



Basic Information

Catalog Number: 85906-3-PBS	GenBank Accession Number: NM_004684.5	Purification Method: Protein A purification
Size: 100ug, Concentration: 1 mg/ml by Nanodrop;	GeneID (NCBI): 8404	CloneNo.: 250331D2
Source: Rabbit	UNIPROT ID: Q8N4S1	
Isotype: IgG	Full Name: SPARC-like 1 (hevin)	
Immunogen Catalog Number: EG2837	Calculated MW: 75 kDa	

Applications

Tested Applications:
Cytometric bead array, Sandwich ELISA, Indirect ELISA, Sample test

Species Specificity:
human

Product Information

85906-3-PBS targets SPARCL1 as part of a matched antibody pair:

MP02200-1: 85906-3-PBS capture and 85906-2-PBS detection (validated in Cytometric bead array, Sandwich ELISA)

MP02200-2: 85906-3-PBS capture and 85906-1-PBS detection (validated in Cytometric bead array)

Unconjugated rabbit recombinant monoclonal antibody in PBS only (BSA and azide free) storage buffer at a concentration of 1 mg/mL, ready for conjugation. Created using Proteintech's proprietary in-house recombinant technology. Recombinant production enables unrivalled batch-to-batch consistency, easy scale-up, and future security of supply.

This conjugation ready format makes antibodies ideal for use in many applications including: ELISAs, multiplex assays requiring matched pairs, mass cytometry, and multiplex imaging applications. Antibody use should be optimized by the end user for each application and assay.

Storage

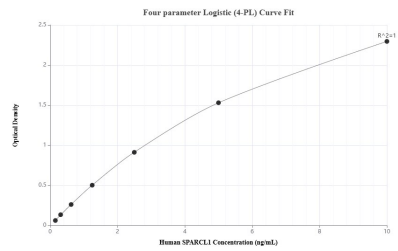
Storage:
Store at -80°C.

Storage Buffer:
PBS only, pH7.3

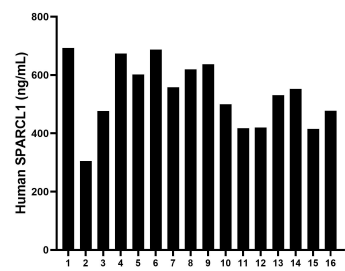
For technical support and original validation data for this product please contact:
T: 1 (888) 4PTGLAB (1-888-478-4522) (toll free in USA), or 1(312) 455-8498 (outside USA)
E: proteintech@ptglab.com
W: ptglab.com

This product is exclusively available under Proteintech Group brand and is not available to purchase from any other manufacturer.

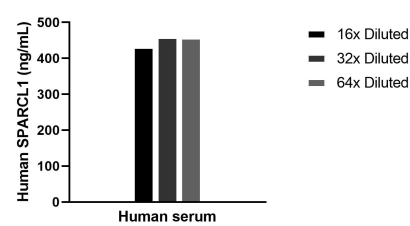
Selected Validation Data



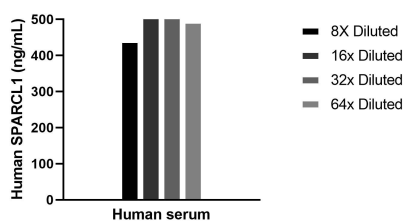
Sandwich ELISA standard curve of MP02200-1, Human SPARCL1 Recombinant Matched Antibody Pair - PBS only. 85906-3-PBS was coated to a plate as the capture antibody and incubated with serial dilutions of standard Eg2837. 85906-2-PBS was HRP conjugated as the detection antibody. Range: 0.156-10 ng/mL



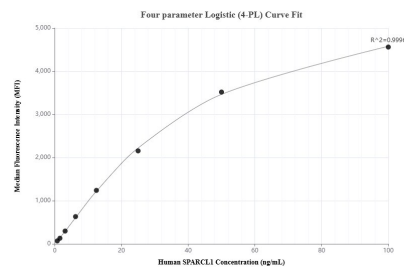
Serum of sixteen individual healthy human donors was measured. The human SPARCL1 concentration of detected samples was determined to be 535.16 ng/mL with a range of 304.76 - 693.17 ng/mL



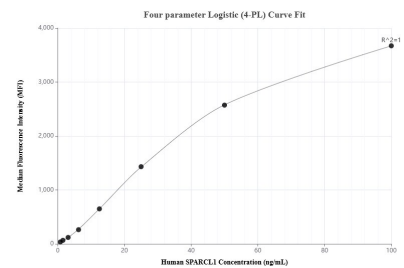
The mean SPARCL1 concentration was determined to be 448.7 ng/mL in Human serum.



The mean SPARCL1 concentration was determined to be 508.2 ng/mL in Human serum.



Cytometric bead array standard curve of MP02200-1, SPARCL1 Recombinant Matched Antibody Pair, PBS Only. Capture antibody: 85906-3-PBS. Detection antibody: 85906-2-PBS. Standard: Eg2837. Range: 0.781-100 ng/mL



Cytometric bead array standard curve of MP02200-2, SPARCL1 Recombinant Matched Antibody Pair, PBS Only. Capture antibody: 85906-3-PBS. Detection antibody: 85906-1-PBS. Standard: Eg2837. Range: 0.781-100 ng/mL