

For Research Use Only

# SPARCL1 Recombinant antibody, PBS Only

Catalog Number: 85906-4-PBS



## Basic Information

|   |   |   |
|---|---|---|
| <b>Catalog Number:</b><br>85906-4-PBS                       | <b>GenBank Accession Number:</b><br>NM_004684.5 | <b>Purification Method:</b><br>Protein A purification |
| <b>Size:</b><br>100ug , Concentration: 1 mg/ml by Nanodrop; | <b>GeneID (NCBI):</b><br>8404                   | <b>CloneNo.:</b><br>250331C1                          |
| <b>Source:</b><br>Rabbit                                    | <b>UNIPROT ID:</b><br>Q8N4S1                    |   |
| <b>Isotype:</b><br>IgG                                      | <b>Full Name:</b><br>SPARC-like 1 (hevin)       |   |
| <b>Immunogen Catalog Number:</b><br>EG2837                  | <b>Calculated MW:</b><br>75 kDa                 |   |
|   | <b>Observed MW:</b><br>130-140 kDa              |   |

## Applications

**Tested Applications:**  
WB, Indirect ELISA

**Species Specificity:**  
human

## Background Information

SPARC-like protein 1 (SPARCL1), also known as SC1 or Hevin, is an extracellular matrix glycoprotein that belongs to the SPARC family. SPARCL1 is widely expressed in normal and cancer tissues, and has been shown to regulate cellular adhesion and migration. SPARCL1 has been implicated in tumor initiation, formation, and progression of various cancers, including pancreatic, prostate, bladder, ovarian, breast and non-small cell lung cancers.

## Storage

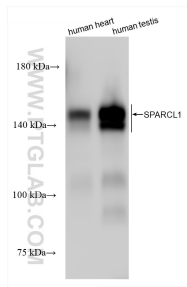
**Storage:**  
Store at -80°C.

**Storage Buffer:**  
PBS only, pH7.3

For technical support and original validation data for this product please contact:  
T: 1 (888) 4PTGLAB (1-888-478-4522) (toll free in USA), or 1(312) 455-8498 (outside USA)  
E: [proteintech@ptglab.com](mailto:proteintech@ptglab.com)  
W: [ptglab.com](http://ptglab.com)

This product is exclusively available under Proteintech Group brand and is not available to purchase from any other manufacturer.

## Selected Validation Data



Various lysates were subjected to SDS PAGE followed by western blot with 85906-4-RR (SPARCL1 antibody) at dilution of 1:5000 incubated at room temperature for 1.5 hours. This data was developed using the same antibody clone with 85906-4-PBS in a different storage buffer formulation.