

For Research Use Only

SPARCL1 Recombinant antibody

Catalog Number: 85906-4-RR



Basic Information

Catalog Number:

85906-4-RR

Size:

100ul , Concentration: 1000 µg/ml by Nanodrop;

Source:

Rabbit

Isotype:

IgG

Immunogen Catalog Number:

EG2837

GenBank Accession Number:

NM_004684.5

GeneID (NCBI):

8404

UNIPROT ID:

Q8N4S1

Full Name:

SPARC-like 1 (hevin)

Calculated MW:

75 kDa

Observed MW:

130-140 kDa

Purification Method:

Protein A purification

CloneNo.:

250331C1

Recommended Dilutions:

WB 1:2000-1:10000

Applications

Tested Applications:

WB, ELISA

Species Specificity:

human

Positive Controls:

WB : human heart tissue, human testis tissue

Background Information

SPARC-like protein 1 (SPARCL1), also known as SC1 or Hevin, is an extracellular matrix glycoprotein that belongs to the SPARC family. SPARCL1 is widely expressed in normal and cancer tissues, and has been shown to regulate cellular adhesion and migration. SPARCL1 has been implicated in tumor initiation, formation, and progression of various cancers, including pancreatic, prostate, bladder, ovarian, breast and non-small cell lung cancers.

Storage

Storage:

Store at -20°C. Stable for one year after shipment.

Storage Buffer:

PBS with 0.02% sodium azide and 50% glycerol, pH7.3

Aliquoting is unnecessary for -20°C storage

*** 20ul sizes contain 0.1% BSA

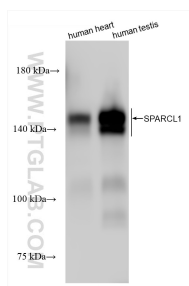
For technical support and original validation data for this product please contact:

T: 1 (888) 4PTGLAB (1-888-478-4522) (toll free in USA), or 1(312) 455-8498 (outside USA)

E: proteintech@ptglab.com
W: ptglab.com

This product is exclusively available under Proteintech Group brand and is not available to purchase from any other manufacturer.

Selected Validation Data



Various lysates were subjected to SDS PAGE followed by western blot with 85906-4-RR (SPARCL1 antibody) at dilution of 1:5000 incubated at room temperature for 1.5 hours.