

For Research Use Only

GRK6 Recombinant antibody, PBS Only

Catalog Number: 85907-4-PBS



Basic Information

Catalog Number:

85907-4-PBS

Size:

100ug, Concentration: 1 mg/ml by Nanodrop;

Source:

Rabbit

Isotype:

IgG

Immunogen Catalog Number:

AG1992

GenBank Accession Number:

BC017272

GeneID (NCBI):

2870

UNIPROT ID:

P43250

Full Name:

G protein-coupled receptor kinase 6

Calculated MW:

66 kDa

Observed MW:

65 kDa

Purification Method:

Protein A purification

CloneNo.:

250270B11

Applications

Tested Applications:

WB, Indirect ELISA

Species Specificity:

human

Background Information

GRK6 (G Protein-Coupled Receptor Kinase 6) is a member of the G protein-coupled receptor kinase (GRK) family, which plays a crucial role in regulating the activity of G protein-coupled receptors (GPCRs). GRK6 specifically phosphorylates the activated forms of GPCRs, initiating their desensitization, internalization, and signaling events that lead to receptor deactivation. This process is essential for maintaining proper cellular responses to extracellular signals.

Storage

Storage:

Store at -80°C.

Storage Buffer:

PBS only, pH7.3

For technical support and original validation data for this product please contact:

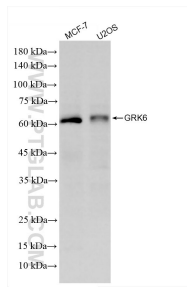
T: 1 (888) 4PTGLAB (1-888-478-4522) (toll free in USA), or 1(312) 455-8498 (outside USA)

E: proteintech@ptglab.com

W: ptglab.com

This product is exclusively available under Proteintech Group brand and is not available to purchase from any other manufacturer.

Selected Validation Data



Various lysates were subjected to SDS PAGE followed by western blot with 85907-4-RR (GRK6 antibody) at dilution of 1:10000 incubated at room temperature for 1.5 hours. This data was developed using the same antibody clone with 85907-4-PBS in a different storage buffer formulation.