

For Research Use Only

# GRK6 Recombinant antibody

Catalog Number: 85907-4-RR



## Basic Information

<b>Catalog Number:</b> 85907-4-RR	<b>GenBank Accession Number:</b> BC017272	<b>Purification Method:</b> Protein A purification
<b>Size:</b> 100ul , Concentration: 1000 µg/ml by Nanodrop;	<b>GeneID (NCBI):</b> 2870	<b>CloneNo.:</b> 250270B11
<b>Source:</b> Rabbit	<b>UNIPROT ID:</b> P43250	<b>Recommended Dilutions:</b> WB 1:5000-1:50000
<b>Isotype:</b> IgG	<b>Full Name:</b> G protein-coupled receptor kinase 6	
<b>Immunogen Catalog Number:</b> AG1992	<b>Calculated MW:</b> 66 kDa	
	<b>Observed MW:</b> 65 kDa	

## Applications

<b>Tested Applications:</b> WB, ELISA	<b>Positive Controls:</b> WB : MCF-7 cells, U2Os cells
<b>Species Specificity:</b> human	

## Background Information

GRK6 (G Protein-Coupled Receptor Kinase 6) is a member of the G protein-coupled receptor kinase (GRK) family, which plays a crucial role in regulating the activity of G protein-coupled receptors (GPCRs). GRK6 specifically phosphorylates the activated forms of GPCRs, initiating their desensitization, internalization, and signaling events that lead to receptor deactivation. This process is essential for maintaining proper cellular responses to extracellular signals.

## Storage

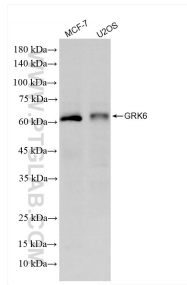
**Storage:**  
Store at -20°C. Stable for one year after shipment.  
**Storage Buffer:**  
PBS with 0.02% sodium azide and 50% glycerol, pH7.3  
**Aliquoting is unnecessary for -20°C storage**

\*\*\* 20ul sizes contain 0.1% BSA

For technical support and original validation data for this product please contact:  
T: 1 (888) 4PTGLAB (1-888-478-4522) (toll free in USA), or 1(312) 455-8498 (outside USA)  
E: [proteintech@ptglab.com](mailto:proteintech@ptglab.com)  
W: [ptglab.com](http://ptglab.com)

This product is exclusively available under Proteintech Group brand and is not available to purchase from any other manufacturer.

## Selected Validation Data



Various lysates were subjected to SDS PAGE followed by western blot with 85907-4-RR (GRK6 antibody) at dilution of 1:10000 incubated at room temperature for 1.5 hours.