

For Research Use Only

SERPINA12/Vaspin Recombinant antibody, PBS Only (Capture)

Catalog Number: 85908-2-PBS



Basic Information

Catalog Number: 85908-2-PBS	GenBank Accession Number: NM_001304461.1	Purification Method: Protein A purification
Size: 100ug, Concentration: 1 mg/ml by Nanodrop;	GeneID (NCBI): 145264	CloneNo.: 250315C11
Source: Rabbit	UNIPROT ID: Q8IW75	
Isotype: IgG	Full Name: serpin peptidase inhibitor, clade A (alpha-1 antitrypsin), member 12	
Immunogen Catalog Number: EG2842	Calculated MW: 47 kDa	

Applications

Tested Applications:
Sandwich ELISA, Indirect ELISA, Sample test

Species Specificity:
human

Product Information

85908-2-PBS targets SERPINA12/Vaspin as part of a matched antibody pair:

MP02213-1: 85908-2-PBS capture and 85908-3-PBS detection (validated in Sandwich ELISA)

Unconjugated rabbit recombinant monoclonal antibody in PBS only (BSA and azide free) storage buffer at a concentration of 1 mg/mL, ready for conjugation. Created using Proteintech's proprietary in-house recombinant technology. Recombinant production enables unrivalled batch-to-batch consistency, easy scale-up, and future security of supply.

This conjugation ready format makes antibodies ideal for use in many applications including: ELISAs, multiplex assays requiring matched pairs, mass cytometry, and multiplex imaging applications. Antibody use should be optimized by the end user for each application and assay.

Storage

Storage:
Store at -80°C.

Storage Buffer:
PBS only, pH7.3

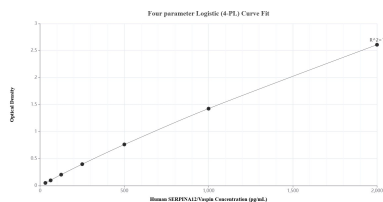
For technical support and original validation data for this product please contact:

T: 1 (888) 4PTGLAB (1-888-478-4522) (toll free in USA), or 1(312) 455-8498 (outside USA)

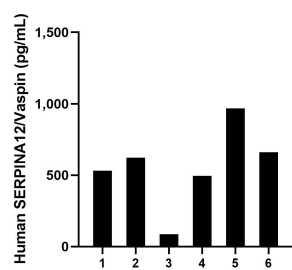
E: proteintech@ptglab.com
W: ptglab.com

This product is exclusively available under Proteintech Group brand and is not available to purchase from any other manufacturer.

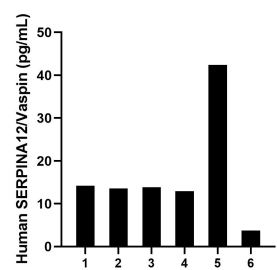
Selected Validation Data



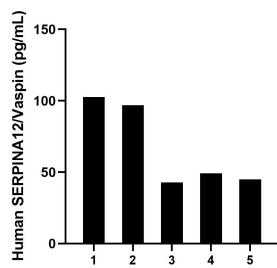
Sandwich ELISA standard curve of MP02213-1, Human SERPINA12/Vaspin Recombinant Matched Antibody Pair - PBS only. 85908-2-PBS was coated to a plate as the capture antibody and incubated with serial dilutions of standard Eg2842. 85908-3-PBS was HRP conjugated as the detection antibody. Range: 31.3-2000 pg/mL



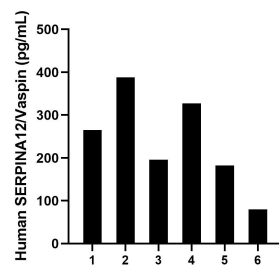
Saliva of six individual healthy human donors was measured. The SERPINA12/Vaspin concentration of detected samples was determined to be 560.7 pg/mL with a range of 87.5-968.1 pg/mL



Urine of six individual healthy human donors was measured. The SERPINA12/Vaspin concentration of detected samples was determined to be 16.8 pg/mL with a range of 3.7-42.4 pg/mL



Human milk of five individual healthy human donors was measured. The SERPINA12/Vaspin concentration of detected samples was determined to be 67.3 pg/mL with a range of 42.8-102.6 pg/mL



Serum of six individual healthy human donors was measured. The SERPINA12/Vaspin concentration of detected samples was determined to be 239.7 pg/mL with a range of 79.8-388.0 pg/mL