

For Research Use Only

# SERPINA12/Vaspin Recombinant antibody, PBS Only (Detector)

Catalog Number: 85908-3-PBS



## Basic Information

<b>Catalog Number:</b> 85908-3-PBS	<b>GenBank Accession Number:</b> NM_001304461.1	<b>Purification Method:</b> Protein A purification
<b>Size:</b> 100ug , Concentration: 1 mg/ml by Nanodrop;	<b>GeneID (NCBI):</b> 145264	<b>CloneNo.:</b> 250315F8
<b>Source:</b> Rabbit	<b>UNIPROT ID:</b> Q8IW75	
<b>Isotype:</b> IgG	<b>Full Name:</b> serpin peptidase inhibitor, clade A (alpha-1 antitrypsin), member 12	
<b>Immunogen Catalog Number:</b> EG2842	<b>Calculated MW:</b> 47 kDa	

## Applications

**Tested Applications:**  
Sandwich ELISA, Indirect ELISA, Sample test

**Species Specificity:**  
human

## Product Information

85908-3-PBS targets SERPINA12/Vaspin as part of a matched antibody pair:

MP02213-1: 85908-2-PBS capture and 85908-3-PBS detection (validated in Sandwich ELISA)

Unconjugated rabbit recombinant monoclonal antibody in PBS only (BSA and azide free) storage buffer at a concentration of 1 mg/mL, ready for conjugation. Created using Proteintech's proprietary in-house recombinant technology. Recombinant production enables unrivalled batch-to-batch consistency, easy scale-up, and future security of supply.

This conjugation ready format makes antibodies ideal for use in many applications including: ELISAs, multiplex assays requiring matched pairs, mass cytometry, and multiplex imaging applications. Antibody use should be optimized by the end user for each application and assay.

## Storage

**Storage:**  
Store at -80°C.

**Storage Buffer:**  
PBS only, pH7.3

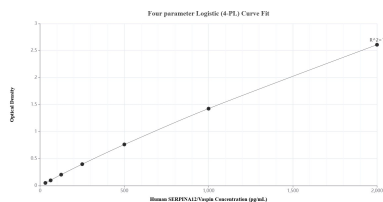
For technical support and original validation data for this product please contact:

T: 1 (888) 4PTGLAB (1-888-478-4522) (toll free in USA), or 1(312) 455-8498 (outside USA)

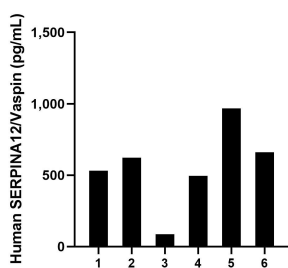
E: [proteintech@ptglab.com](mailto:proteintech@ptglab.com)  
W: [ptglab.com](http://ptglab.com)

**This product is exclusively available under Proteintech Group brand and is not available to purchase from any other manufacturer.**

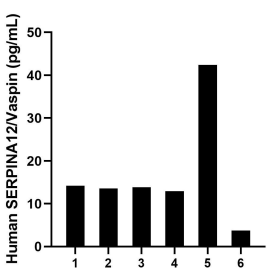
# Selected Validation Data



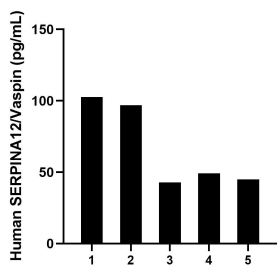
Sandwich ELISA standard curve of MP02213-1, Human SERPINA12/Vaspin Recombinant Matched Antibody Pair - PBS only. 85908-2-PBS was coated to a plate as the capture antibody and incubated with serial dilutions of standard Eg2842. 85908-3-PBS was HRP conjugated as the detection antibody. Range: 31.3-2000 pg/mL



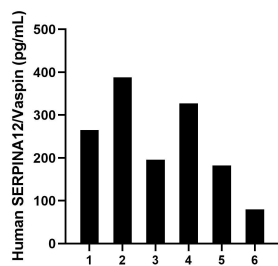
Saliva of six individual healthy human donors was measured. The SERPINA12/Vaspin concentration of detected samples was determined to be 560.7 pg/mL with a range of 87.5-968.1 pg/mL



Urine of six individual healthy human donors was measured. The SERPINA12/Vaspin concentration of detected samples was determined to be 16.8 pg/mL with a range of 3.7-42.4 pg/mL



Human milk of five individual healthy human donors was measured. The SERPINA12/Vaspin concentration of detected samples was determined to be 67.3 pg/mL with a range of 42.8-102.6 pg/mL



Serum of six individual healthy human donors was measured. The SERPINA12/Vaspin concentration of detected samples was determined to be 239.7 pg/mL with a range of 79.8-388.0 pg/mL