

For Research Use Only

Mouse CLEC10A/CD301 Recombinant antibody, PBS Only

Catalog Number: 85911-5-PBS



Basic Information

Catalog Number: 85911-5-PBS	GenBank Accession Number: NM_010796.3	Purification Method: Protein A purification
Size: 100ug , Concentration: 1 mg/ml by Nanodrop;	GeneID (NCBI): 17312	CloneNo.: 242636A8
Source: Rabbit	UNIPROT ID: P49300	
Isotype: IgG	Full Name: macrophage galactose N-acetyl-galactosamine specific lectin 1	
Immunogen Catalog Number: EG2698	Calculated MW: 35 kDa	
	Observed MW: 40 kDa	

Applications

Tested Applications:
WB, Indirect ELISA

Species Specificity:
mouse

Background Information

C-type lectin domain family 10 member A (CLEC10A), also known as CD301, macrophage galactose-type C-type lectin (MGL), DC-asialoglyco protein receptor (DC-ASGP-R) or human macrophage lectin (HML), is a type II transmembrane glycoprotein having a calcium-dependent carbohydrate recognition domain (PMID: 8598452; 11919201; 11698450). CLEC10A is expressed exclusively by myeloid professional antigen-presenting cells such as immature dendritic cells (DCs) and alternatively activated macrophages (PMID: 16998493). CLEC10A is a marker for human CD1c+ DCs (cDC2) (PMID: 29755453). It functions as an endocytic receptor for glycosylated antigens (PMID: 11919201).

Storage

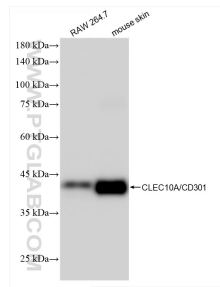
Storage:
Store at -80°C.

Storage Buffer:
PBS only, pH7.3

For technical support and original validation data for this product please contact:
T: 1 (888) 4PTGLAB (1-888-478-4522) (toll free in USA), or 1(312) 455-8498 (outside USA)
E: proteintech@ptglab.com
W: ptglab.com

This product is exclusively available under Proteintech Group brand and is not available to purchase from any other manufacturer.

Selected Validation Data



Various lysates were subjected to SDS PAGE followed by western blot with 85911-5-RR (CLEC10A/CD301 antibody) at dilution of 1:5000 incubated at room temperature for 1.5 hours. This data was developed using the same antibody clone with 85911-5-PBS in a different storage buffer formulation.