

For Research Use Only

CLEC10A/CD301 Recombinant antibody

Catalog Number: 85911-5-RR



Basic Information

Catalog Number: 85911-5-RR	GenBank Accession Number: NM_010796.3	Purification Method: Protein A purification
Size: 100ul , Concentration: 1000 µg/ml by Nanodrop;	GeneID (NCBI): 17312	CloneNo.: 242636A8
Source: Rabbit	UNIPROT ID: P49300	Recommended Dilutions: WB: 1:2000-1:10000
Isotype: IgG	Full Name: macrophage galactose N-acetyl-galactosamine specific lectin 1	
Immunogen Catalog Number: EG2698	Calculated MW: 35 kDa	
	Observed MW: 40 kDa	

Applications

Tested Applications: WB, ELISA	Positive Controls: WB : RAW 264.7 cells, mouse skin tissue
Species Specificity: mouse	

Background Information

C-type lectin domain family 10 member A (CLEC10A), also known as CD301, macrophage galactose-type C-type lectin (MGL), DC-asialoglyco protein receptor (DC-ASGP-R) or human macrophage lectin (HML), is a type II transmembrane glycoprotein having a calcium-dependent carbohydrate recognition domain (PMID: 8598452; 11919201; 11698450). CLEC10A is expressed exclusively by myeloid professional antigen-presenting cells such as immature dendritic cells (DCs) and alternatively activated macrophages (PMID: 16998493). CLEC10A is a marker for human CD1c+ DCs (cDC2) (PMID: 29755453). It functions as an endocytic receptor for glycosylated antigens (PMID: 11919201).

Storage

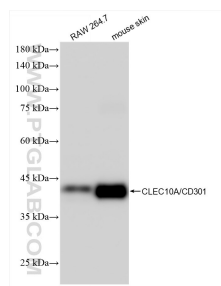
Storage:
Store at -20°C. Stable for one year after shipment.
Storage Buffer:
PBS with 0.02% sodium azide and 50% glycerol, pH7.3
Aliquoting is unnecessary for -20°C storage

*** 20ul sizes contain 0.1% BSA

For technical support and original validation data for this product please contact:
T: 1 (888) 4PTGLAB (1-888-478-4522) (toll free in USA), or 1(312) 455-8498 (outside USA)
E: proteintech@ptglab.com
W: ptglab.com

This product is exclusively available under Proteintech Group brand and is not available to purchase from any other manufacturer.

Selected Validation Data



Various lysates were subjected to SDS PAGE followed by western blot with 85911-5-RR (CLEC10A/CD301 antibody) at dilution of 1:5000 incubated at room temperature for 1.5 hours.