

For Research Use Only

ATP1B1 Recombinant antibody

Catalog Number: 85916-1-RR



Basic Information

Catalog Number: 85916-1-RR	GenBank Accession Number: NM_009721.6	Purification Method: Protein A purification
Size: 100ul , Concentration: 1000 µg/ml by Nanodrop;	GeneID (NCBI): 11931	CloneNo.: 243093E3
Source: Rabbit	UNIPROT ID: P14094	Recommended Dilutions: WB 1:5000-1:50000 IHC 1:250-1:1000
Isotype: IgG	Full Name: ATPase, Na ⁺ /K ⁺ transporting, beta 1 polypeptide	
Immunogen Catalog Number: EG3007	Calculated MW: 35 kDa	
	Observed MW: 40-50 kDa	

Applications

Tested Applications:

WB, IHC, ELISA

Species Specificity:

human, mouse, rat

Note-IHC: suggested antigen retrieval with TE buffer pH 9.0; (*) Alternatively, antigen retrieval may be performed with citrate buffer pH 6.0

Positive Controls:

WB : mouse brain tissue, fetal human brain tissue, mouse heart tissue, rat heart tissue, rat brain tissue

IHC : mouse brain tissue, mouse liver tissue

Background Information

ATP1B1 is one of beta subunits of the Na⁺/K⁺ ATPase and responsible for formation and structural integrity of the Na⁺/K⁺ ATPase. The Na⁺/K⁺ ATPase is a plasma membrane pump consisting of alpha, beta, and gamma subunits. At least four of Na⁺/K⁺-ATPase beta subunits (β1, β2, β3, β4) have been identified in mammalian cells; the β1-subunit (ATP1B1) is the most ubiquitous. The Na⁺/K⁺ ATPase β subunits have multiple N-glycosylation sites. The predicted MW of ATP1B1 is 35 kDa, while it migrates around 40-52 kDa due to the variable glycosylation. (PMID: 10896885, 17714085)

Storage

Storage:

Store at -20°C. Stable for one year after shipment.

Storage Buffer:

PBS with 0.02% sodium azide and 50% glycerol, pH7.3

Aliquoting is unnecessary for -20°C storage

*** 20ul sizes contain 0.1% BSA

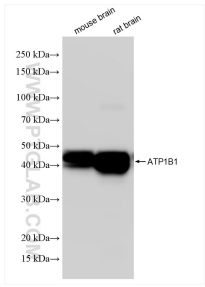
For technical support and original validation data for this product please contact:

T: 1 (888) 4PTGLAB (1-888-478-4522) (toll free in USA), or 1(312) 455-8498 (outside USA)

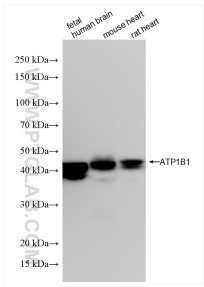
E: proteintech@ptglab.com
W: ptglab.com

This product is exclusively available under Proteintech Group brand and is not available to purchase from any other manufacturer.

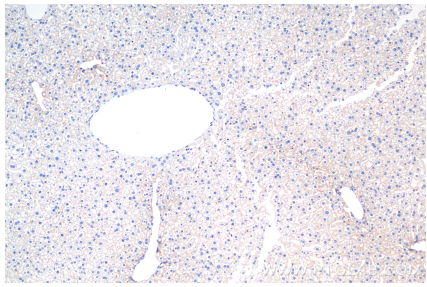
Selected Validation Data



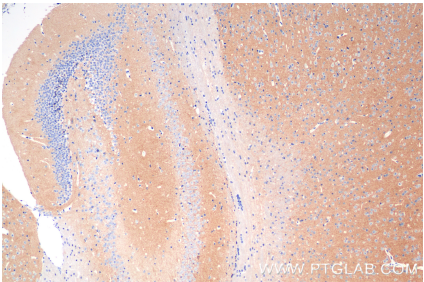
Various lysates were subjected to SDS PAGE followed by western blot with 85916-1-RR (Atp1b1 antibody) at dilution of 1:10000 incubated at room temperature for 1.5 hours.



Various lysates were subjected to SDS PAGE followed by western blot with 85916-1-RR (Atp1b1 antibody) at dilution of 1:10000 incubated at room temperature for 1.5 hours.



Immunohistochemical analysis of paraffin-embedded mouse liver tissue slide using 85916-1-RR (ATP1B1 antibody) at dilution of 1:500 (under 10x lens). Heat mediated antigen retrieval with Tris-EDTA buffer (pH 9.0).



Immunohistochemical analysis of paraffin-embedded mouse brain tissue slide using 85916-1-RR (ATP1B1 antibody) at dilution of 1:500 (under 10x lens). Heat mediated antigen retrieval with Tris-EDTA buffer (pH 9.0).