

For Research Use Only

# SATB2 Recombinant antibody

Catalog Number: 85922-3-RR



## Basic Information

<b>Catalog Number:</b> 85922-3-RR	<b>GenBank Accession Number:</b> NM_015265	<b>Purification Method:</b> Protein A purification
<b>Size:</b> 100ul , Concentration: 1000 µg/ml by Nanodrop;	<b>GeneID (NCBI):</b> 23314	<b>CloneNo.:</b> 250096D11
<b>Source:</b> Rabbit	<b>UNIPROT ID:</b> Q9UPW6	<b>Recommended Dilutions:</b> WB 1:500-1:2000
<b>Isotype:</b> IgG	<b>Full Name:</b> SATB homeobox 2	
	<b>Calculated MW:</b> 83 kDa	
	<b>Observed MW:</b> ~100 kDa	

## Applications

<b>Tested Applications:</b> WB, ELISA	<b>Positive Controls:</b> WB : THP-1 cells, HEK-293 cells, K-562 cells
<b>Species Specificity:</b> human	

## Background Information

SATB2, also named as KIAA1034, belongs to the CUT homeobox family. SATB2 binds to DNA at nuclear matrix- or scaffold-associated regions. SATB2 recognizes the sugar-phosphate structure of double-stranded DNA. SATB2 is a transcription factor controlling nuclear gene expression, by binding to matrix attachment regions (MARs) of DNA and inducing a local chromatin-loop remodeling. SATB2 acts as a docking site for several chromatin remodeling enzymes and also by recruiting corepressors (HDACs) or coactivators (HATs) directly to promoters and enhancers. It is required for the initiation of the upper-layer neurons (UL1) specific genetic program and for the inactivation of deep-layer neurons (DL) and UL2 specific genes, probably by modulating BCL11B expression. It is a repressor of Ctip2 and regulatory determinant of corticocortical connections in the developing cerebral cortex. SATB2 may play an important role in palate formation. SATB2 acts as a molecular node in a transcriptional network regulating skeletal development and osteoblast differentiation.

## Storage

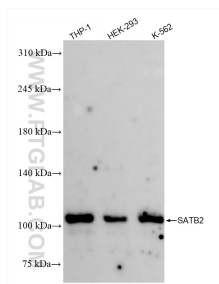
**Storage:**  
Store at -20°C. Stable for one year after shipment.  
**Storage Buffer:**  
PBS with 0.02% sodium azide and 50% glycerol, pH7.3  
Aliquoting is unnecessary for -20°C storage

\*\*\* 20ul sizes contain 0.1% BSA

For technical support and original validation data for this product please contact:  
T: 1 (888) 4PTGLAB (1-888-478-4522) (toll free in USA), or 1(312) 455-8498 (outside USA)  
E: proteintech@ptglab.com  
W: ptglab.com

This product is exclusively available under Proteintech Group brand and is not available to purchase from any other manufacturer.

## Selected Validation Data



Various lysates were subjected to SDS PAGE followed by western blot with 85922-3-RR (SATB2 antibody) at dilution of 1:1000 incubated at room temperature for 1.5 hours.