

For Research Use Only

# Neuroserpin Recombinant antibody, PBS Only

Catalog Number: 85923-1-PBS



## Basic Information

**Catalog Number:**

85923-1-PBS

**Size:**

100ug , Concentration: 1 mg/ml by  
Nanodrop;

**Source:**

Rabbit

**Isotype:**

IgG

**Immunogen Catalog Number:**

EG2819

**GenBank Accession Number:**

NM\_005025.4

**GeneID (NCBI):**

5274

**UNIPROT ID:**

Q99574

**Full Name:**

serpin peptidase inhibitor, clade I  
(neuroserpin), member 1

**Calculated MW:**

46 kDa

**Observed MW:**

46 kDa

**Purification Method:**

Protein A purification

**CloneNo.:**

250112E7

## Applications

**Tested Applications:**

WB, IHC, Indirect ELISA

**Species Specificity:**

human, mouse, pig

## Background Information

Neuroserpin is a member of the serpin family of serine protease inhibitors predominantly expressed in the nervous system, such as the cerebral cortex, hippocampus and the spinal cord. Neuroserpin exerts protective effects in neurons against excitotoxicity both in vitro and in vivo. Its proteolytic inhibitory activity is shown to protect neurons against damage caused by plasmin activation. Mice overexpressing neuroserpin exhibited loss of tPA activity in the brain. Overexpression of neuroserpin in primary neurons leads to increased dendritic arborization and altered dendritic spine shape.

## Storage

**Storage:**

Store at -80°C.

**Storage Buffer:**

PBS only, pH7.3

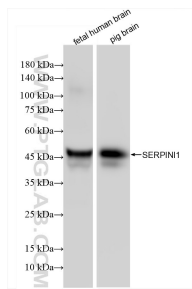
For technical support and original validation data for this product please contact:

T: 1 (888) 4PTGLAB (1-888-478-4522) (toll free  
in USA), or 1(312) 455-8498 (outside USA)

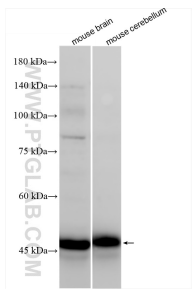
E: [proteintech@ptglab.com](mailto:proteintech@ptglab.com)  
W: [ptglab.com](http://ptglab.com)

This product is exclusively available under Proteintech Group brand and is not available to purchase from any other manufacturer.

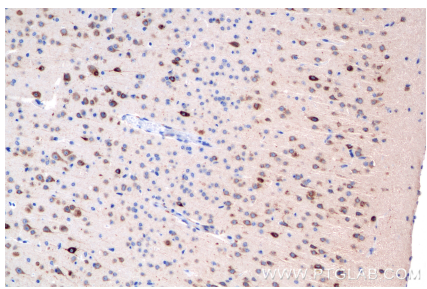
## Selected Validation Data



Various lysates were subjected to SDS PAGE followed by western blot with 85923-1-RR (SERPINI1 antibody) at dilution of 1:1000 incubated at room temperature for 1.5 hours. This data was developed using the same antibody clone with 85923-1-PBS in a different storage buffer formulation.



Various lysates were subjected to SDS PAGE followed by western blot with 85923-1-RR (Neuroserpin antibody) at dilution of 1:1000 incubated at room temperature for 1.5 hours. This data was developed using the same antibody clone with 85923-1-PBS in a different storage buffer formulation.



Immunohistochemical analysis of paraffin-embedded mouse brain tissue slide using 85923-1-RR (Neuroserpin antibody) at dilution of 1:400 (under 20x lens). Heat mediated antigen retrieval with Tris-EDTA buffer (pH 9.0). This data was developed using the same antibody clone with 85923-1-PBS in a different storage buffer formulation.