

For Research Use Only

Neuroserpin Recombinant antibody

Catalog Number: 85923-1-RR



Basic Information

Catalog Number: 85923-1-RR	GenBank Accession Number: NM_005025.4	Purification Method: Protein A purification
Size: 100ul , Concentration: 1000 µg/ml by Nanodrop;	GeneID (NCBI): 5274	CloneNo.: 250112E7
Source: Rabbit	UNIPROT ID: Q99574	Recommended Dilutions: WB 1:500-1:2000 IHC 1:200-1:800
Isotype: IgG	Full Name: serpin peptidase inhibitor, clade I (neuroserpin), member 1	
Immunogen Catalog Number: EG2819	Calculated MW: 46 kDa	
	Observed MW: 46 kDa	

Applications

Tested Applications: WB, IHC, ELISA	Positive Controls:
Species Specificity: human, mouse, pig	WB : fetal human brain tissue, mouse brain tissue, pig brain tissue, mouse cerebellum tissue
Note-IHC: suggested antigen retrieval with TE buffer pH 9.0; (*) Alternatively, antigen retrieval may be performed with citrate buffer pH 6.0	IHC : mouse brain tissue,

Background Information

Neuroserpin is a member of the serpin family of serine protease inhibitors predominantly expressed in the nervous system, such as the cerebral cortex, hippocampus and the spinal cord. Neuroserpin exerts protective effects in neurons against excitotoxicity both in vitro and in vivo. Its proteolytic inhibitory activity is shown to protect neurons against damage caused by plasmin activation. Mice overexpressing neuroserpin exhibited loss of tPA activity in the brain. Overexpression of neuroserpin in primary neurons leads to increased dendritic arborization and altered dendritic spine shape.

Storage

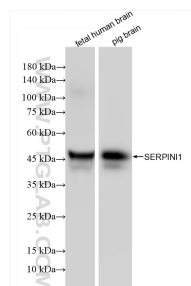
Storage:
Store at -20°C. Stable for one year after shipment.
Storage Buffer:
PBS with 0.02% sodium azide and 50% glycerol, pH7.3
Aliquoting is unnecessary for -20°C storage

*** 20ul sizes contain 0.1% BSA

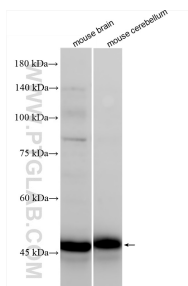
For technical support and original validation data for this product please contact:
T: 1 (888) 4PTGLAB (1-888-478-4522) (toll free in USA), or 1(312) 455-8498 (outside USA)
E: proteintech@ptglab.com
W: ptglab.com

This product is exclusively available under Proteintech Group brand and is not available to purchase from any other manufacturer.

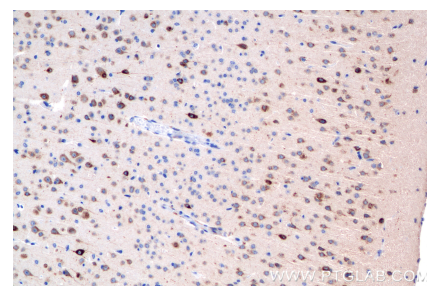
Selected Validation Data



Various lysates were subjected to SDS PAGE followed by western blot with 85923-1-RR (SERPIN1 antibody) at dilution of 1:1000 incubated at room temperature for 1.5 hours.



Various lysates were subjected to SDS PAGE followed by western blot with 85923-1-RR (Neuroserpin antibody) at dilution of 1:1000 incubated at room temperature for 1.5 hours.



Immunohistochemical analysis of paraffin-embedded mouse brain tissue slide using 85923-1-RR (Neuroserpin antibody) at dilution of 1:400 (under 20x lens). Heat mediated antigen retrieval with Tris-EDTA buffer (pH 9.0).