

For Research Use Only

# SRPRB Recombinant monoclonal antibody

Catalog Number: 85926-2-RR



## Basic Information

<b>Catalog Number:</b> 85926-2-RR	<b>GenBank Accession Number:</b> BC065299	<b>Purification Method:</b> Protein A purification
<b>Size:</b> 100ul , Concentration: 1000 µg/ml by Nanodrop;	<b>GeneID (NCBI):</b> 58477	<b>CloneNo.:</b> 242807E8
<b>Source:</b> Rabbit	<b>UNIPROT ID:</b> Q9Y5M8	<b>Recommended Dilutions:</b> WB: 1:5000-1:50000 IHC: 1:250-1:1000 IF/ICC: 1:50-1:500
<b>Isotype:</b> IgG	<b>Full Name:</b> signal recognition particle receptor, B subunit	
<b>Immunogen Catalog Number:</b> AG6215	<b>Calculated MW:</b> 30 kDa	
	<b>Observed MW:</b> 30 kDa	

## Applications

**Tested Applications:**  
WB, IHC, IF/ICC, ELISA

**Species Specificity:**  
human, mouse, rat

**Note-IHC: suggested antigen retrieval with TE buffer pH 9.0; (\*) Alternatively, antigen retrieval may be performed with citrate buffer pH 6.0**

**Positive Controls:**

**WB :** HeLa cells, HepG2 cells, L02 cells, MCF-7 cells, COLO 320 cells, mouse liver tissue, rat liver tissue

**IHC :** mouse brain tissue, mouse liver tissue

**IF/ICC :** HepG2 cells,

## Storage

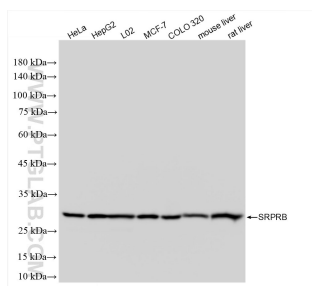
**Storage:**  
Store at -20°C. Stable for one year after shipment.  
**Storage Buffer:**  
PBS with 0.02% sodium azide and 50% glycerol, pH7.3  
Aliquoting is unnecessary for -20°C storage

\*\*\* 20ul sizes contain 0.1% BSA

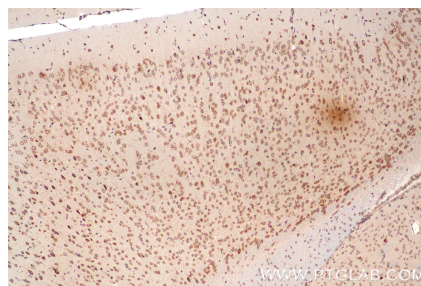
For technical support and original validation data for this product please contact:  
T: 1 (888) 4PTGLAB (1-888-478-4522) (toll free in USA), or 1(312) 455-8498 (outside USA)  
E: [proteintech@ptglab.com](mailto:proteintech@ptglab.com)  
W: [ptglab.com](http://ptglab.com)

This product is exclusively available under Proteintech Group brand and is not available to purchase from any other manufacturer.

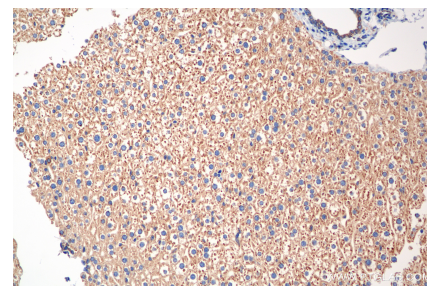
## Selected Validation Data



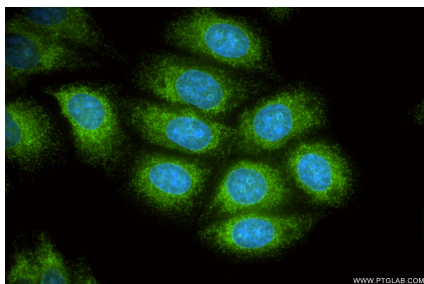
Various lysates were subjected to SDS PAGE followed by western blot with 85926-2-RR (SRPRB antibody) at dilution of 1:10000 incubated at room temperature for 1.5 hours.



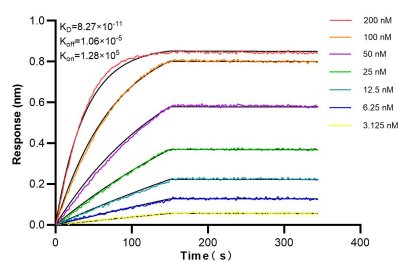
Immunohistochemical analysis of paraffin-embedded mouse brain tissue slide using 85926-2-RR (SRPRB antibody) at dilution of 1:500 (under 10x lens). Heat mediated antigen retrieval with Tris-EDTA buffer (pH 9.0).



Immunohistochemical analysis of paraffin-embedded mouse liver tissue slide using 85926-2-RR (SRPRB antibody) at dilution of 1:500 (under 20x lens). Heat mediated antigen retrieval with Tris-EDTA buffer (pH 9.0).



Immunofluorescent analysis of (-20°C Ethanol) fixed HepG2 cells using SRPRB antibody (85926-2-RR, Clone: 242807E8) at dilution of 1:200 and CoraLite®488-Conjugated Goat Anti-Rabbit IgG(H+L) (SA00013-2).



Biolayer interferometry (BLI) kinetic assays of 85926-2-RR against Human SRPRB were performed. The affinity constant is 82.7 pM.