

For Research Use Only

# TH Recombinant antibody, PBS Only (Capture)

Catalog Number: 85929-3-PBS



## Basic Information

<b>Catalog Number:</b> 85929-3-PBS	<b>GenBank Accession Number:</b> BC104967	<b>Purification Method:</b> Protein A purification
<b>Size:</b> 100ug , Concentration: 1 mg/ml by Nanodrop;	<b>GeneID (NCBI):</b> 7054	<b>CloneNo.:</b> 250146A3
<b>Source:</b> Rabbit	<b>UNIPROT ID:</b> P07101	
<b>Isotype:</b> IgG	<b>Full Name:</b> tyrosine hydroxylase	
<b>Immunogen Catalog Number:</b> AG23034	<b>Calculated MW:</b> 528 aa, 59 kDa	

## Applications

**Tested Applications:**  
Cytometric bead array, Indirect ELISA, Sample test

**Species Specificity:**  
human

## Product Information

85929-3-PBS targets TH as part of a matched antibody pair:

MP02201-1: 85929-3-PBS capture and 85929-2-PBS detection (validated in Cytometric bead array)

Unconjugated rabbit recombinant monoclonal antibody in PBS only (BSA and azide free) storage buffer at a concentration of 1 mg/mL, ready for conjugation. Created using Proteintech's proprietary in-house recombinant technology. Recombinant production enables unrivalled batch-to-batch consistency, easy scale-up, and future security of supply.

This conjugation ready format makes antibodies ideal for use in many applications including: ELISAs, multiplex assays requiring matched pairs, mass cytometry, and multiplex imaging applications. Antibody use should be optimized by the end user for each application and assay.

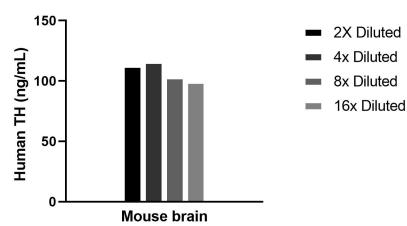
## Storage

**Storage:**  
Store at -80°C.  
**Storage Buffer:**  
PBS only, pH7.3

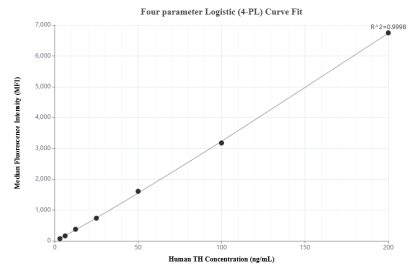
For technical support and original validation data for this product please contact:  
T: 1 (888) 4PTGLAB (1-888-478-4522) (toll free in USA), or 1(312) 455-8498 (outside USA)  
E: proteintech@ptglab.com  
W: ptglab.com

This product is exclusively available under Proteintech Group brand and is not available to purchase from any other manufacturer.

Selected Validation Data



The mean TH concentration was determined to be 107.4 ng/mL in Mouse brain tissue extract based on a 7.0 mg/mL extract load.



Cytometric bead array standard curve of MP02201-1, TH Recombinant Matched Antibody Pair, PBS Only. Capture antibody: 85929-3-PBS. Detection antibody: 85929-2-PBS. Standard: Ag23034. Range: 3.125-200 ng/mL