

For Research Use Only

# Spartin/SPG20 Recombinant antibody, PBS Only

Catalog Number: 85938-2-PBS



## Basic Information

<b>Catalog Number:</b> 85938-2-PBS	<b>GenBank Accession Number:</b> BC047083	<b>Purification Method:</b> Protein A purification
<b>Size:</b> 100ug , Concentration: 1 mg/ml by Nanodrop;	<b>GeneID (NCBI):</b> 23111	<b>CloneNo.:</b> 250440A11
<b>Source:</b> Rabbit	<b>UNIPROT ID:</b> Q8NOX7	
<b>Isotype:</b> IgG	<b>Full Name:</b> spastic paraplegia 20 (Troyer syndrome)	
<b>Immunogen Catalog Number:</b> AG4815	<b>Calculated MW:</b> 72 kDa	
	<b>Observed MW:</b> 75-84 kDa	

## Applications

**Tested Applications:**  
WB, Indirect ELISA

**Species Specificity:**  
human

## Background Information

SPG20 (spastic paraplegia 20) gene encodes a multifunctional Spartin protein. SPG20 protein is highly expressed in adipose tissue and may be implicated in endosomal trafficking and microtubule dynamics. SPG20 is mutated in Troyer syndrome, a hereditary spastic paraplegia defined by degeneration of upper motor neurons, recent study showed that regulation of SPG20 on mitochondrial calcium homeostasis may contribute to the pathophysiology of Troyer syndrome. Hypermethylation of SPG20 promoter, found in colorectal cancer patients, may play a role in cytokinesis arrest in colorectal tumorigenesis.

## Storage

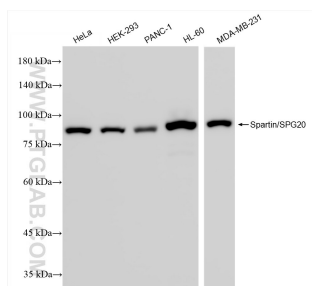
**Storage:**  
Store at -80°C.

**Storage Buffer:**  
PBS only, pH7.3

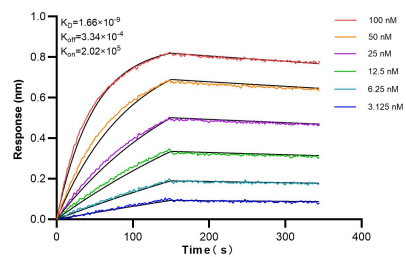
For technical support and original validation data for this product please contact:  
T: 1 (888) 4PTGLAB (1-888-478-4522) (toll free in USA), or 1(312) 455-8498 (outside USA)  
E: [proteintech@ptglab.com](mailto:proteintech@ptglab.com)  
W: [ptglab.com](http://ptglab.com)

This product is exclusively available under Proteintech Group brand and is not available to purchase from any other manufacturer.

## Selected Validation Data



Various lysates were subjected to SDS PAGE followed by western blot with 85938-2-RR (Sparti/SPG20 antibody) at dilution of 1:10000 incubated at room temperature for 1.5 hours. This data was developed using the same antibody clone with 85938-2-PBS in a different storage buffer formulation.



Biolayer interferometry (BLI) kinetic assays of 85938-2-RR against Human Sparti/SPG20 were performed. The affinity constant is 1.66 nM.