

For Research Use Only

Spartin/SPG20 Recombinant antibody

Catalog Number: 85938-2-RR



Basic Information

Catalog Number: 85938-2-RR	GenBank Accession Number: BC047083	Purification Method: Protein A purification
Size: 100ul , Concentration: 1000 µg/ml by Nanodrop;	GeneID (NCBI): 23111	CloneNo.: 250440A11
Source: Rabbit	UNIPROT ID: Q8NOX7	Recommended Dilutions: WB: 1:5000-1:50000
Isotype: IgG	Full Name: spastic paraplegia 20 (Troyer syndrome)	
Immunogen Catalog Number: AG4815	Calculated MW: 72 kDa	
	Observed MW: 75-84 kDa	

Applications

Tested Applications: WB, ELISA	Positive Controls:
Species Specificity: human	WB : HeLa cells, HEK-293 cells, PANC-1 cells, HL-60 cells, MDA-MB-231 cells

Background Information

SPG20 (spastic paraplegia 20) gene encodes a multifunctional Spartin protein. SPG20 protein is highly expressed in adipose tissue and may be implicated in endosomal trafficking and microtubule dynamics. SPG20 is mutated in Troyer syndrome, a hereditary spastic paraplegia defined by degeneration of upper motor neurons, recent study showed that regulation of SPG20 on mitochondrial calcium homeostasis may contribute to the pathophysiology of Troyer syndrome. Hypermethylation of SPG20 promoter, found in colorectal cancer patients, may play a role in cytokinesis arrest in colorectal tumorigenesis.

Storage

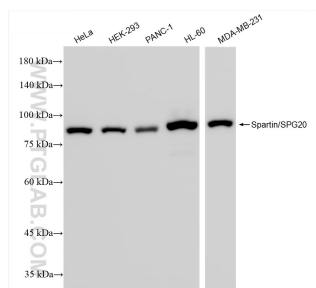
Storage:
Store at -20°C. Stable for one year after shipment.
Storage Buffer:
PBS with 0.02% sodium azide and 50% glycerol, pH7.3
Aliquoting is unnecessary for -20°C storage

*** 20ul sizes contain 0.1% BSA

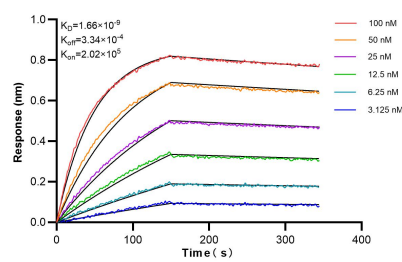
For technical support and original validation data for this product please contact:
T: 1 (888) 4PTGLAB (1-888-478-4522) (toll free in USA), or 1(312) 455-8498 (outside USA)
E: proteintech@ptglab.com
W: ptglab.com

This product is exclusively available under Proteintech Group brand and is not available to purchase from any other manufacturer.

Selected Validation Data



Various lysates were subjected to SDS PAGE followed by western blot with 85938-2-RR (Sparti/SPG20 antibody) at dilution of 1:10000 incubated at room temperature for 1.5 hours.



Biolayer interferometry (BLI) kinetic assays of 85938-2-RR against Human Sparti/SPG20 were performed. The affinity constant is 1.66 nM.