

For Research Use Only

NUMB Recombinant antibody, PBS Only (Detector)

Catalog Number: 85939-5-PBS



Basic Information

Catalog Number: 85939-5-PBS	GenBank Accession Number: NM_001005743	Purification Method: Protein A purification
Size: 100ug , Concentration: 1 mg/ml by Nanodrop;	GeneID (NCBI): 8650	CloneNo.: 250417D2
Source: Rabbit	UNIPROT ID: P49757	
Isotype: IgG	Full Name: numb homolog (Drosophila)	
Immunogen Catalog Number: AG31553	Calculated MW: 71KD	

Applications

Tested Applications:
Sandwich ELISA, Indirect ELISA, Sample test

Species Specificity:
human

Product Information

85939-5-PBS targets NUMB as part of a matched antibody pair:

MP02209-2: 85939-3-PBS capture and 85939-5-PBS detection (validated in Sandwich ELISA)

Unconjugated rabbit recombinant monoclonal antibody in PBS only (BSA and azide free) storage buffer at a concentration of 1 mg/mL, ready for conjugation. Created using Proteintech's proprietary in-house recombinant technology. Recombinant production enables unrivalled batch-to-batch consistency, easy scale-up, and future security of supply.

This conjugation ready format makes antibodies ideal for use in many applications including: ELISAs, multiplex assays requiring matched pairs, mass cytometry, and multiplex imaging applications. Antibody use should be optimized by the end user for each application and assay.

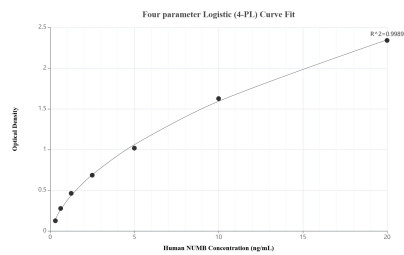
Storage

Storage:
Store at -80°C.
Storage Buffer:
PBS only, pH7.3

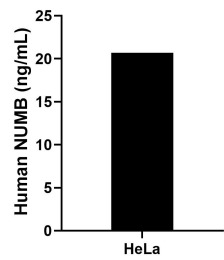
For technical support and original validation data for this product please contact:
T: 1 (888) 4PTGLAB (1-888-478-4522) (toll free in USA), or 1(312) 455-8498 (outside USA)
E: proteintech@ptglab.com
W: ptglab.com

This product is exclusively available under Proteintech Group brand and is not available to purchase from any other manufacturer.

Selected Validation Data



Sandwich ELISA standard curve of MP02209-2, Human NUMB Recombinant Matched Antibody Pair - PBS only. 85939-3-PBS was coated to a plate as the capture antibody and incubated with serial dilutions of standard Ag31553. 85939-5-PBS was HRP conjugated as the detection antibody. Range: 0.313-20 ng/mL



The mean NUMB concentration was determined to be 20.70 ng/mL in HeLa cell extract based on a 1.30 mg/mL extract load.