

For Research Use Only

CA6 Recombinant antibody, PBS Only (Capture/Detector)

Catalog Number: 85940-1-PBS



Basic Information

Catalog Number: 85940-1-PBS	GenBank Accession Number: NM_001215.3	Purification Method: Protein A purification
Size: 100ug , Concentration: 1 mg/ml by Nanodrop;	GeneID (NCBI): 765	CloneNo.: 250412G3
Source: Rabbit	UNIPROT ID: P23280-1	
Isotype: IgG	Full Name: carbonic anhydrase VI	
Immunogen Catalog Number: EG2963	Calculated MW: 35 kDa	

Applications

Tested Applications:
Cytometric bead array, Sandwich ELISA, Indirect ELISA, Sample test

Species Specificity:
human

Product Information

85940-1-PBS targets CA6 as part of a matched antibody pair:

MP02211-1: 85940-2-PBS capture and 85940-1-PBS detection (validated in Cytometric bead array)

MP02211-2: 85940-1-PBS capture and 85940-2-PBS detection (validated in Sandwich ELISA)

Unconjugated rabbit recombinant monoclonal antibody in PBS only (BSA and azide free) storage buffer at a concentration of 1 mg/mL, ready for conjugation. Created using Proteintech's proprietary in-house recombinant technology. Recombinant production enables unrivalled batch-to-batch consistency, easy scale-up, and future security of supply.

This conjugation ready format makes antibodies ideal for use in many applications including: ELISAs, multiplex assays requiring matched pairs, mass cytometry, and multiplex imaging applications. Antibody use should be optimized by the end user for each application and assay.

Storage

Storage:
Store at -80°C.
Storage Buffer:
PBS only, pH7.3

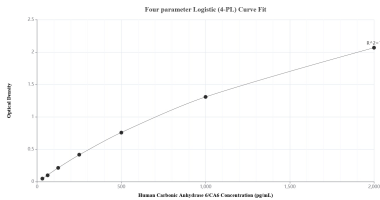
For technical support and original validation data for this product please contact:

T: 1 (888) 4PTGLAB (1-888-478-4522) (toll free in USA), or 1(312) 455-8498 (outside USA)

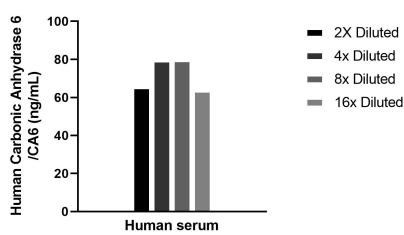
E: proteintech@ptglab.com
W: ptglab.com

This product is exclusively available under Proteintech Group brand and is not available to purchase from any other manufacturer.

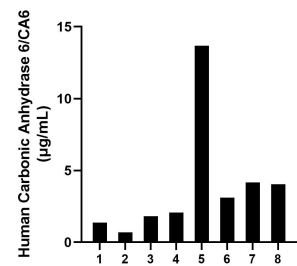
Selected Validation Data



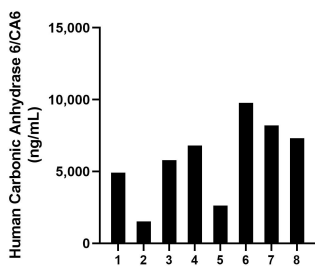
Sandwich ELISA standard curve of MP02211-2, Human Carbonic Anhydrase 6/CA6 Recombinant Matched Antibody Pair - PBS only. 85940-1-PBS was coated to a plate as the capture antibody and incubated with serial dilutions of standard Eg2963. 85940-2-PBS was HRP conjugated as the detection antibody. Range: 31.3-2000 pg/mL



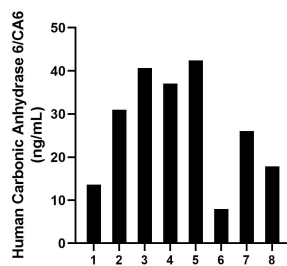
The mean Carbonic Anhydrase 6/CA6 concentration was determined to be 71.8 ng/mL in human serum.



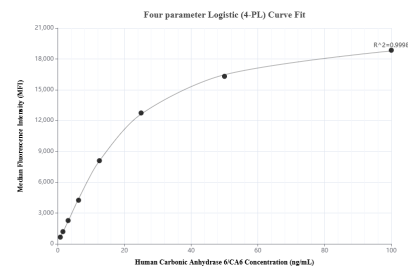
Human milk of eight individual healthy human donors was measured. The Carbonic Anhydrase 6/CA6 concentration of detected samples was determined to be 3.9 µg/mL with a range of 0.7-13.7 µg/mL



Saliva of eight individual healthy human donors was measured. The Carbonic Anhydrase 6/CA6 concentration of detected samples was determined to be 5,869.5 ng/mL with a range of 1,531.8-9,760.2 ng/mL



Serum of eight individual healthy human donors was measured. The Carbonic Anhydrase 6/CA6 concentration of detected samples was determined to be 27.1 ng/mL with a range of 8.0-42.4 ng/mL



Cytometric bead array standard curve of MP02211-1, Carbonic Anhydrase 6/CA6 Recombinant Matched Antibody Pair, PBS Only. Capture antibody: 85940-2-PBS. Detection antibody: 85940-1-PBS. Standard: Eg2963. Range: 0.781-100 ng/mL