

For Research Use Only

# GRK1 Recombinant antibody, PBS Only

Catalog Number: 85942-1-PBS



## Basic Information

**Catalog Number:**

85942-1-PBS

**Size:**

100ug , Concentration: 1 mg/ml by Nanodrop;

**Source:**

Rabbit

**Isotype:**

IgG

**Immunogen Catalog Number:**

AG18063

**GenBank Accession Number:**

BC140945

**GeneID (NCBI):**

6011

**UNIPROT ID:**

Q15835

**Full Name:**

G protein-coupled receptor kinase 1

**Calculated MW:**

563 aa, 64 kDa

**Observed MW:**

64 kDa

**Purification Method:**

Protein A purification

**CloneNo.:**

250433A4

## Applications

**Tested Applications:**

WB, IHC, IF-P, Indirect ELISA

**Species Specificity:**

human, mouse, rat

## Background Information

GRK1(G protein-coupled receptor kinase 1) is also named as RHOK, RK, GPRK1, and belongs to the AGC Ser/Thr protein kinase family. It is involved in quenching of light-induced signal transduction in the photoreceptor. GRK1 is a photoreceptor-specific enzyme that mediates adaptation of photoreceptors to light and protects these cells against light-induced injury.

## Storage

**Storage:**

Store at -80°C.

**Storage Buffer:**

PBS only, pH7.3

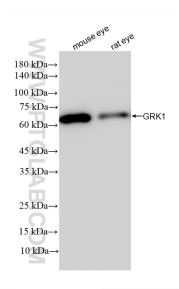
For technical support and original validation data for this product please contact:

T: 1 (888) 4PTGLAB (1-888-478-4522) (toll free in USA), or 1(312) 455-8498 (outside USA)

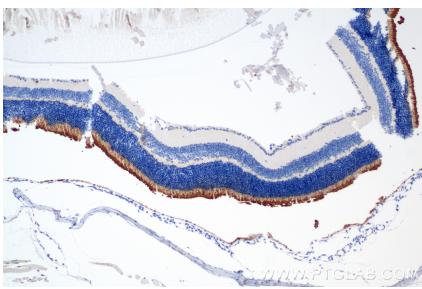
E: [proteintech@ptglab.com](mailto:proteintech@ptglab.com)  
W: [ptglab.com](http://ptglab.com)

This product is exclusively available under Proteintech Group brand and is not available to purchase from any other manufacturer.

## Selected Validation Data



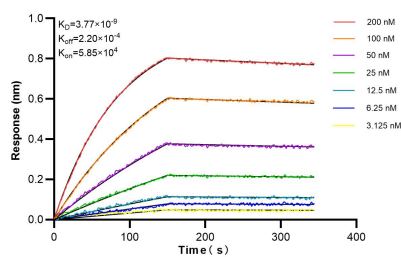
Various lysates were subjected to SDS PAGE followed by western blot with 85942-1-RR (GRK1 antibody) at dilution of 1:5000 incubated at room temperature for 1.5 hours. This data was developed using the same antibody clone with 85942-1-PBS in a different storage buffer formulation.



Immunohistochemical analysis of paraffin-embedded mouse eye tissue slide using 85942-1-RR (GRK1 antibody) at dilution of 1:5000 (under 10x lens). Heat mediated antigen retrieval with Tris-EDTA buffer (pH 9.0). This data was developed using the same antibody clone with 85942-1-PBS in a different storage buffer formulation.



Immunofluorescent analysis of (4% PFA) fixed paraffin-embedded mouse eye tissue using GRK1 antibody (85942-1-RR, Clone: 250433A4 ) at dilution of 1:1000 and CoraLite®488-Conjugated Goat Anti-Rabbit IgG(H+L) (SA00013-2). Heat mediated antigen retrieval with Tris-EDTA buffer (pH 9.0). This data was developed using the same antibody clone with 85942-1-PBS in a different storage buffer formulation.



Biolayer interferometry (BLI) kinetic assays of 85942-1-RR against Human GRK1 were performed. The affinity constant is 3.77 nM.