

For Research Use Only

# GRK1 Recombinant antibody

Catalog Number: 85942-1-RR



## Basic Information

<b>Catalog Number:</b> 85942-1-RR	<b>GenBank Accession Number:</b> BC140945	<b>Purification Method:</b> Protein A purification
<b>Size:</b> 100ul , Concentration: 1000 µg/ml by Nanodrop;	<b>GeneID (NCBI):</b> 6011	<b>CloneNo.:</b> 250433A4
<b>Source:</b> Rabbit	<b>UNIPROT ID:</b> Q15835	<b>Recommended Dilutions:</b> WB: 1:2000-1:10000 IHC: 1:2500-1:10000 IF-P: 1:500-1:2000
<b>Isotype:</b> IgG	<b>Full Name:</b> G protein-coupled receptor kinase 1	
<b>Immunogen Catalog Number:</b> AG18063	<b>Calculated MW:</b> 563 aa, 64 kDa	
	<b>Observed MW:</b> 64 kDa	

## Applications

<b>Tested Applications:</b> WB, IHC, IF-P, ELISA	<b>Positive Controls:</b>
<b>Species Specificity:</b> human, mouse, rat	<b>WB :</b> mouse eye tissue, mouse retina tissue
<b>Note-IHC: suggested antigen retrieval with TE buffer pH 9.0; (*) Alternatively, antigen retrieval may be performed with citrate buffer pH 6.0</b>	<b>IHC :</b> mouse eye tissue,
	<b>IF-P :</b> mouse eye tissue,

## Background Information

GRK1(G protein-coupled receptor kinase 1) is also named as RHOK, RK, GPRK1, and belongs to the AGC Ser/Thr protein kinase family. It is involved in quenching of light-induced signal transduction in the phosphoreceptor. GRK1 is a photoreceptor-specific enzyme that mediates adaptation of photoreceptors to light and protects these cells against light-induced injury.

## Storage

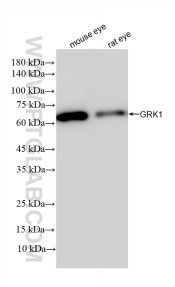
**Storage:**  
Store at -20°C. Stable for one year after shipment.  
**Storage Buffer:**  
PBS with 0.02% sodium azide and 50% glycerol, pH7.3  
Aliquoting is unnecessary for -20°C storage

\*\*\* 20ul sizes contain 0.1% BSA

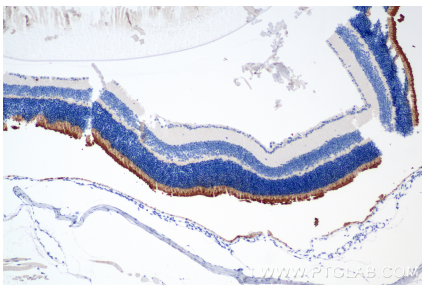
For technical support and original validation data for this product please contact:  
T: 1 (888) 4PTGLAB (1-888-478-4522) (toll free in USA), or 1(312) 455-8498 (outside USA)  
E: proteintech@ptglab.com  
W: ptglab.com

This product is exclusively available under Proteintech Group brand and is not available to purchase from any other manufacturer.

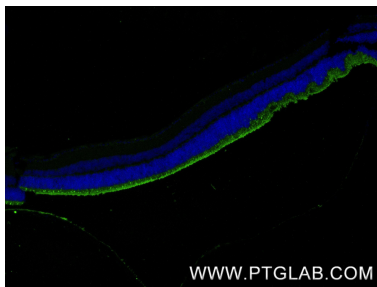
Selected Validation Data



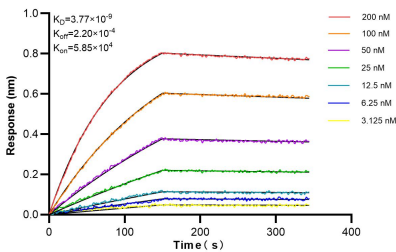
Various lysates were subjected to SDS PAGE followed by western blot with 85942-1-RR (GRK1 antibody) at dilution of 1:5000 incubated at room temperature for 1.5 hours.



Immunohistochemical analysis of paraffin-embedded mouse eye tissue slide using 85942-1-RR (GRK1 antibody) at dilution of 1:5000 (under 10x lens). Heat mediated antigen retrieval with Tris-EDTA buffer (pH 9.0).



Immunofluorescent analysis of (4% PFA) fixed paraffin-embedded mouse eye tissue using GRK1 antibody (85942-1-RR, Clone: 250433A4 ) at dilution of 1:1000 and CoraLite®488-Conjugated Goat Anti-Rabbit IgG(H+L) (SA00013-2). Heat mediated antigen retrieval with Tris-EDTA buffer (pH 9.0).



Biolayer interferometry (BLI) kinetic assays of 85942-1-RR against Human GRK1 were performed. The affinity constant is 3.77 nM.