

For Research Use Only

EVI2B Recombinant antibody

Catalog Number: 85943-1-RR



Basic Information

Catalog Number: 85943-1-RR	GenBank Accession Number: BC005926	Purification Method: Protein A purification
Size: 100ul , Concentration: 1000 µg/ml by Nanodrop;	GeneID (NCBI): 2124	CloneNo.: 250344C9
Source: Rabbit	UNIPROT ID: P34910	Recommended Dilutions: WB 1:2000-1:10000 IF/ICC 1:200-1:800
Isotype: IgG	Full Name: ecotropic viral integration site 2B	
Immunogen Catalog Number: EG3709	Calculated MW: 448 aa, 49 kDa	
	Observed MW: 60 kDa	

Applications

Tested Applications: WB, IF/ICC, ELISA	Positive Controls:
Species Specificity: human	WB : A549 cells, HepG2 cells, Ramos cells, THP-1 cells, HL-60 cells
	IF/ICC : THP-1 cells,

Background Information

Ecotropic viral integration site 2B protein (EVI2B) is a type I transmembrane protein embedded within intron 27b of the neurofibromatosis type 1 (NF1) gene. It is transcribed in the opposite direction to the NF1 gene (PMID: 37584733). EVI2B is a downstream target of CCAAT/enhancer binding protein alpha (C/EBPα), which is crucial for myeloid differentiation and the function of hematopoietic progenitors (PMID: 36830696). This protein is highly expressed in mature granulocytes and is involved in the regulation of immune cell maturation (PMID: 28186500).

Storage

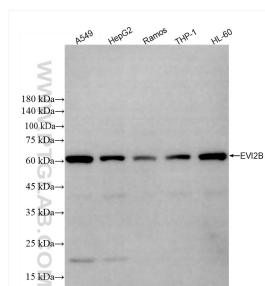
Storage:
Store at -20°C. Stable for one year after shipment.
Storage Buffer:
PBS with 0.02% sodium azide and 50% glycerol, pH7.3
Aliquoting is unnecessary for -20°C storage

*** 20ul sizes contain 0.1% BSA

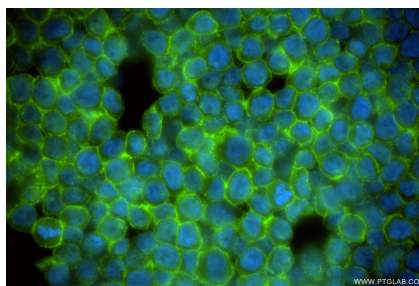
For technical support and original validation data for this product please contact:
T: 1 (888) 4PTGLAB (1-888-478-4522) (toll free in USA), or 1(312) 455-8498 (outside USA)
E: proteintech@ptglab.com
W: ptglab.com

This product is exclusively available under Proteintech Group brand and is not available to purchase from any other manufacturer.

Selected Validation Data



Various lysates were subjected to SDS PAGE followed by western blot with 85943-1-RR (EVI2B antibody) at dilution of 1:5000 incubated at room temperature for 1.5 hours.



Immunofluorescent analysis of (4% PFA) fixed THP-1 cells using EVI2B antibody (85943-1-RR, Clone: 250344C9) at dilution of 1:400 and CoraLite® 488-Conjugated Goat Anti-Rabbit IgG(H+L) (SA00013-2).