

For Research Use Only

# SSB Recombinant antibody

Catalog Number: 85944-2-RR



## Basic Information

Catalog Number:

85944-2-RR

Size:

100ul , Concentration: 1000 µg/ml by  
Nanodrop;

Source:

Rabbit

Isotype:

IgG

Immunogen Catalog Number:

AG2294

GenBank Accession Number:

BC001289

GeneID (NCBI):

6741

UNIPROT ID:

P05455

Full Name:

Sjogren syndrome antigen B  
(autoantigen La)

Calculated MW:

408 aa, 47 kDa

Observed MW:

46-50 kDa

Purification Method:

Protein A purification

CloneNo.:

250465G10

Recommended Dilutions:

WB 1:2000-1:10000

IF/ICC 1:500-1:2000

## Applications

Tested Applications:

WB, ELISA

Species Specificity:

human

Positive Controls:

WB : HeLa cells, HEK-293 cells, Jurkat cells, Ramos  
cells, Raji cells

IF/ICC : HeLa cells,

## Storage

Storage:

Store at -20°C. Stable for one year after shipment.

Storage Buffer:

PBS with 0.02% sodium azide and 50% glycerol, pH7.3

Aliquoting is unnecessary for -20°C storage

\*\*\* 20ul sizes contain 0.1% BSA

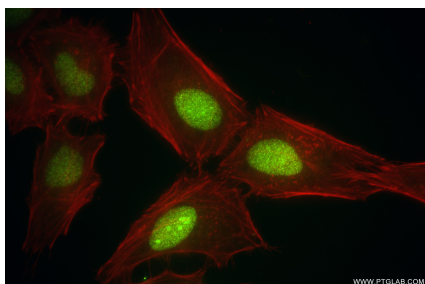
For technical support and original validation data for this product please contact:

T: 1 (888) 4PTGLAB (1-888-478-4522) (toll free  
in USA), or 1(312) 455-8498 (outside USA)

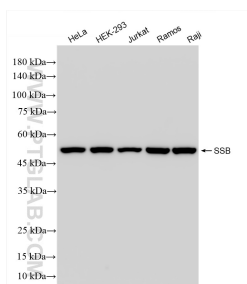
E: proteintech@ptglab.com  
W: ptglab.com

This product is exclusively available under Proteintech  
Group brand and is not available to purchase from any  
other manufacturer.

## Selected Validation Data



Immunofluorescent analysis of (4% PFA) fixed HeLa cells using SSB antibody (85944-2-RR, Clone: 250465G10 ) at dilution of 1:1000 and CoraLite®488-Conjugated Goat Anti-Rabbit IgG(H+L) (SA00013-2), CL594-Phalloidin (red).



Various lysates were subjected to SDS PAGE followed by western blot with 85944-2-RR (SSB antibody) at dilution of 1:5000 incubated at room temperature for 1.5 hours.