

For Research Use Only

# SSB Recombinant antibody, PBS Only (Detector)

Catalog Number: 85944-3-PBS



## Basic Information

<b>Catalog Number:</b> 85944-3-PBS	<b>GenBank Accession Number:</b> BC001289	<b>Purification Method:</b> Protein A purification
<b>Size:</b> 100ug, Concentration: 1 mg/ml by Nanodrop;	<b>GeneID (NCBI):</b> 6741	<b>CloneNo.:</b> 250465C3
<b>Source:</b> Rabbit	<b>UNIPROT ID:</b> P05455	
<b>Isotype:</b> IgG	<b>Full Name:</b> Sjogren syndrome antigen B (autoantigen La)	
<b>Immunogen Catalog Number:</b> AG2294	<b>Calculated MW:</b> 408 aa, 47 kDa	

## Applications

**Tested Applications:**  
Sandwich ELISA, Indirect ELISA, Sample test

**Species Specificity:**  
human

## Product Information

85944-3-PBS targets SSB as part of a matched antibody pair:

MP02269-1: 85944-1-PBS capture and 85944-3-PBS detection (validated in Sandwich ELISA)

Unconjugated rabbit recombinant monoclonal antibody in PBS only (BSA and azide free) storage buffer at a concentration of 1 mg/mL, ready for conjugation. Created using Proteintech's proprietary in-house recombinant technology. Recombinant production enables unrivalled batch-to-batch consistency, easy scale-up, and future security of supply.

This conjugation ready format makes antibodies ideal for use in many applications including: ELISAs, multiplex assays requiring matched pairs, mass cytometry, and multiplex imaging applications. Antibody use should be optimized by the end user for each application and assay.

## Storage

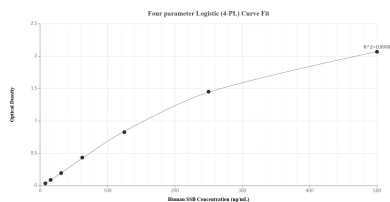
**Storage:**  
Store at -80°C.

**Storage Buffer:**  
PBS only, pH7.3

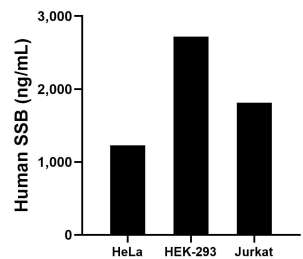
For technical support and original validation data for this product please contact:  
T: 1 (888) 4PTGLAB (1-888-478-4522) (toll free in USA), or 1(312) 455-8498 (outside USA)  
E: [proteintech@ptglab.com](mailto:proteintech@ptglab.com)  
W: [ptglab.com](http://ptglab.com)

This product is exclusively available under Proteintech Group brand and is not available to purchase from any other manufacturer.

## Selected Validation Data



Sandwich ELISA standard curve of MP02269-1, Human SSB Recombinant Matched Antibody Pair - PBS only. 85944-1-PBS was coated to a plate as the capture antibody and incubated with serial dilutions of standard Ag2294. 85944-3-PBS was HRP conjugated as the detection antibody. Range: 7.81-500 ng/mL.



The mean SSB concentration was determined to be 1,226.41 ng/mL in HeLa cell extract based on a 1.30 mg/mL extract load, 2718.95 ng/mL in HEK-293 cell extract based on a 2.20 mg/mL extract load and 1,813.81 ng/mL in Jurkat cell extract based on a 1.90 mg/mL extract load.