

For Research Use Only

RDBP Recombinant antibody

Catalog Number: 85945-1-RR



Basic Information

Catalog Number: 85945-1-RR	GenBank Accession Number: BC011600	Purification Method: Protein A purification
Size: 100ul , Concentration: 1000 µg/ml by Nanodrop;	GeneID (NCBI): 7936	CloneNo.: 250420G2
Source: Rabbit	UNIPROT ID: P18615	Recommended Dilutions: WB 1:2500-1:7500 IF/ICC 1:500-1:2000
Isotype: IgG	Full Name: RD RNA binding protein	
Immunogen Catalog Number: AG1186	Calculated MW: 37 kDa, 43 kDa	
	Observed MW: 42 kDa	

Applications

Tested Applications: WB, IF/ICC, ELISA	Positive Controls:
Species Specificity: human, mouse, rat	WB : HeLa cells, Calu-3 cells, mouse brain tissue, rat brain tissue, HEK-293 cells IF/ICC : HeLa cells,

Background Information

RDBP, also named NELF-E and RD, belongs to the RRM NELF-E family. It is an essential component of the NELF complex which is a complex that negatively regulates the elongation of transcription by RNA polymerase II. The NELF complex, a complex acts via an association with the DSIF complex and causes transcriptional pausing, is counteracted by the P-TEFb kinase complex. RDBP was recently found implicated in RNA polymerase II pausing by association with Hsp90. Catalog# 10705-1-AP is a widely used rabbit polyclonal antibody obtained by immunizing animals with full-length RDBP of human origin.

Storage

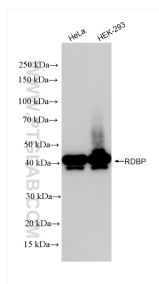
Storage:
Store at -20°C. Stable for one year after shipment.
Storage Buffer:
PBS with 0.02% sodium azide and 50% glycerol, pH7.3
Aliquoting is unnecessary for -20°C storage

*** 20ul sizes contain 0.1% BSA

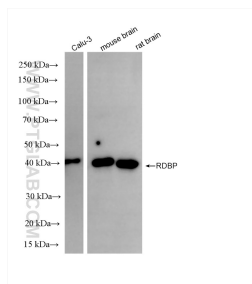
For technical support and original validation data for this product please contact:
T: 1 (888) 4PTGLAB (1-888-478-4522) (toll free in USA), or 1(312) 455-8498 (outside USA)
E: proteintech@ptglab.com
W: ptglab.com

This product is exclusively available under Proteintech Group brand and is not available to purchase from any other manufacturer.

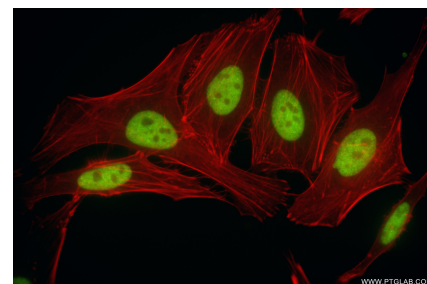
Selected Validation Data



Various lysates were subjected to SDS PAGE followed by western blot with 85945-1-RR (RDBP antibody) at dilution of 1:10000 incubated at room temperature for 1.5 hours.



Various lysates were subjected to SDS PAGE followed by western blot with 85945-1-RR (RDBP antibody) at dilution of 1:10000 incubated at room temperature for 1.5 hours.



Immunofluorescent analysis of (4% PFA) fixed HeLa cells using RDBP antibody (85945-1-RR, Clone: 250420G2) at dilution of 1:1000 and CoraLite® 488-Conjugated Goat Anti-Rabbit IgG(H+L) (SA00013-2), CL594-Phalloidin (red).