

For Research Use Only

# DLX6 Recombinant antibody

Catalog Number: 85946-1-RR



## Basic Information

<b>Catalog Number:</b> 85946-1-RR	<b>GenBank Accession Number:</b> BC069363	<b>Purification Method:</b> Protein A purification
<b>Size:</b> 100ul , Concentration: 1000 µg/ml by Nanodrop;	<b>GeneID (NCBI):</b> 1750	<b>CloneNo.:</b> 250408B4
<b>Source:</b> Rabbit	<b>UNIPROT ID:</b> P56179	<b>Recommended Dilutions:</b> WB: 1:1000-1:4000 IHC: 1:50-1:500
<b>Isotype:</b> IgG	<b>Full Name:</b> distal-less homeobox 6	
<b>Immunogen Catalog Number:</b> AG19724	<b>Calculated MW:</b> 175 aa, 20 kDa	
	<b>Observed MW:</b> 32 kDa	

## Applications

<b>Tested Applications:</b> WB, IHC, ELISA	<b>Positive Controls:</b>
<b>Species Specificity:</b> human, mouse, rat	<b>WB :</b> mouse brain tissue, rat brain tissue
<b>Note-IHC:</b> suggested antigen retrieval with <b>TE buffer pH 9.0; (*) Alternatively, antigen retrieval may be performed with citrate buffer pH 6.0</b>	<b>IHC :</b> mouse embryo tissue,

## Background Information

Distal-less homeobox 6 (DLX6) has been reported to play important roles in the development of craniofacial structures, inner ear, limb, and brain. DLX6 was significantly highly expressed in oral cancer tissues in The Cancer Genome Atlas database. DLX6 promotes cell proliferation and suppresses cell apoptosis in oral cancer cells. EGFR-CCND1 pathway might be the potential mechanism participating in the regulating axis (PMID: 33215805).

## Storage

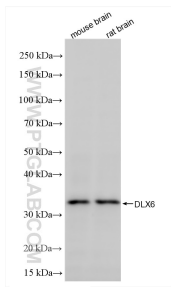
**Storage:**  
Store at -20°C. Stable for one year after shipment.  
**Storage Buffer:**  
PBS with 0.02% sodium azide and 50% glycerol, pH7.3  
Aliquoting is unnecessary for -20°C storage

\*\*\* 20ul sizes contain 0.1% BSA

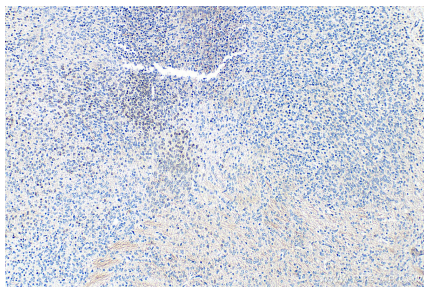
For technical support and original validation data for this product please contact:  
T: 1 (888) 4PTGLAB (1-888-478-4522) (toll free in USA), or 1(312) 455-8498 (outside USA)  
E: [proteintech@ptglab.com](mailto:proteintech@ptglab.com)  
W: [ptglab.com](http://ptglab.com)

This product is exclusively available under Proteintech Group brand and is not available to purchase from any other manufacturer.

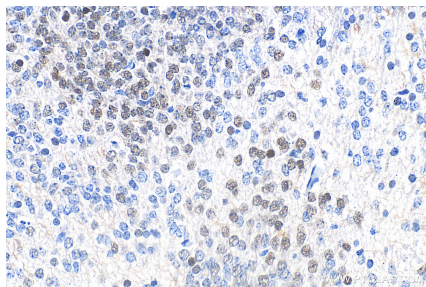
## Selected Validation Data



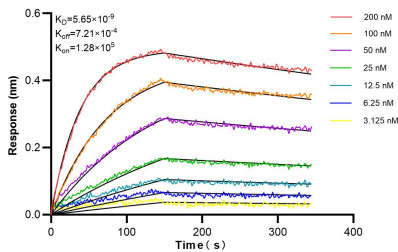
Various lysates were subjected to SDS PAGE followed by western blot with 85946-1-RR (DLX6 antibody) at dilution of 1:2000 incubated at room temperature for 1.5 hours.



Immunohistochemical analysis of paraffin-embedded mouse embryo tissue slide using 85946-1-RR (DLX6 antibody) at dilution of 1:200 (under 10x lens). Heat mediated antigen retrieval with Tris-EDTA buffer (pH 9.0).



Immunohistochemical analysis of paraffin-embedded mouse embryo tissue slide using 85946-1-RR (DLX6 antibody) at dilution of 1:200 (under 40x lens). Heat mediated antigen retrieval with Tris-EDTA buffer (pH 9.0).



Biolayer interferometry (BLI) kinetic assays of 85946-1-RR against Human DLX6 were performed. The affinity constant is 5.65 nM.