

For Research Use Only

MCEE Recombinant antibody, PBS Only

Catalog Number: 85948-1-PBS



Basic Information

Catalog Number:

85948-1-PBS

Size:

100ug , Concentration: 1 mg/ml by Nanodrop;

Source:

Rabbit

Isotype:

IgG

Immunogen Catalog Number:

AG9665

GenBank Accession Number:

BC020825

GeneID (NCBI):

84693

UNIPROT ID:

Q96PE7

Full Name:

methylmalonyl CoA epimerase

Calculated MW:

176 aa, 19 kDa

Observed MW:

17 kDa

Purification Method:

Protein A purification

CloneNo.:

250393G9

Applications

Tested Applications:

WB, Indirect ELISA

Species Specificity:

human, mouse, rat

Storage

Storage:

Store at -80°C.

Storage Buffer:

PBS only, pH7.3

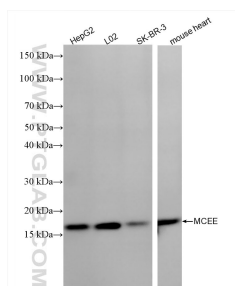
For technical support and original validation data for this product please contact:

T: 1 (888) 4PTGLAB (1-888-478-4522) (toll free in USA), or 1(312) 455-8498 (outside USA)

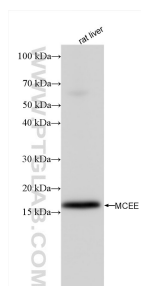
E: proteintech@ptglab.com
W: ptglab.com

This product is exclusively available under Proteintech Group brand and is not available to purchase from any other manufacturer.

Selected Validation Data



Various lysates were subjected to SDS PAGE followed by western blot with 85948-1-RR (MCEE antibody) at dilution of 1:10000 incubated at room temperature for 1.5 hours. This data was developed using the same antibody clone with 85948-1-PBS in a different storage buffer formulation.



rat liver tissue were subjected to SDS PAGE followed by western blot with 85948-1-RR (MCEE antibody) at dilution of 1:10000 incubated at room temperature for 1.5 hours. This data was developed using the same antibody clone with 85948-1-PBS in a different storage buffer formulation.