

For Research Use Only

MCEE Recombinant antibody

Catalog Number: 85948-1-RR



Basic Information

Catalog Number:

85948-1-RR

Size:

100ul , Concentration: 1000 µg/ml by

Nanodrop;

Source:

Rabbit

Isotype:

IgG

Immunogen Catalog Number:

AG9665

GenBank Accession Number:

BC020825

GeneID (NCBI):

84693

UNIPROT ID:

Q96PE7

Full Name:

methylmalonyl CoA epimerase

Calculated MW:

176 aa, 19 kDa

Observed MW:

17 kDa

Purification Method:

Protein A purification

CloneNo.:

250393G9

Recommended Dilutions:

WB 1:5000-1:50000

Applications

Tested Applications:

WB, ELISA

Species Specificity:

human, mouse, rat

Positive Controls:

WB : HepG2 cells, rat liver tissue, L02 cells, SK-BR-3 cells, mouse heart tissue

Storage

Storage:

Store at -20°C. Stable for one year after shipment.

Storage Buffer:

PBS with 0.02% sodium azide and 50% glycerol, pH7.3

Aliquoting is unnecessary for -20°C storage

*** 20ul sizes contain 0.1% BSA

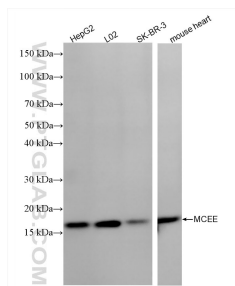
For technical support and original validation data for this product please contact:

T: 1 (888) 4PTGLAB (1-888-478-4522) (toll free
in USA), or 1(312) 455-8498 (outside USA)

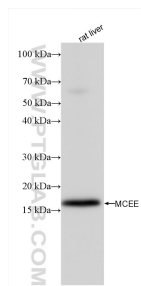
E: proteintech@ptglab.com
W: ptglab.com

This product is exclusively available under Proteintech Group brand and is not available to purchase from any other manufacturer.

Selected Validation Data



Various lysates were subjected to SDS PAGE followed by western blot with 85948-1-RR (MCEE antibody) at dilution of 1:10000 incubated at room temperature for 1.5 hours.



rat liver tissue were subjected to SDS PAGE followed by western blot with 85948-1-RR (MCEE antibody) at dilution of 1:10000 incubated at room temperature for 1.5 hours.