

For Research Use Only

SNAPIN Recombinant antibody, PBS Only

Catalog Number: 85949-1-PBS



Basic Information

Catalog Number: 85949-1-PBS	GenBank Accession Number: BC000761	Purification Method: Protein A purification
Size: 100ug , Concentration: 1 mg/ml by Nanodrop;	GeneID (NCBI): 23557	CloneNo.: 250300F4
Source: Rabbit	UNIPROT ID: O95295	
Isotype: IgG	Full Name: SNAP-associated protein	
Immunogen Catalog Number: AG0101	Calculated MW: 15 kDa	
	Observed MW: 15-18 kDa	

Applications

Tested Applications:
WB, Indirect ELISA

Species Specificity:
human

Background Information

Snapin, a protein of relative molecular weight of 15kd, is implicated in neurotransmission by binding to SNAP-25. Snapin was enriched in neurons and exclusively located on synaptic vesicle membrane, which may be a PKA target for modulating transmitter release through the cAMP-dependent signal-transduction pathway. This antibody can recognize the 15-18kd(Monomer) and 30-36kd(Dimer) forms of SNAPIN.

Storage

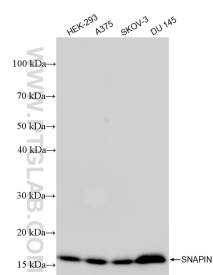
Storage:
Store at -80°C.

Storage Buffer:
PBS only, pH7.3

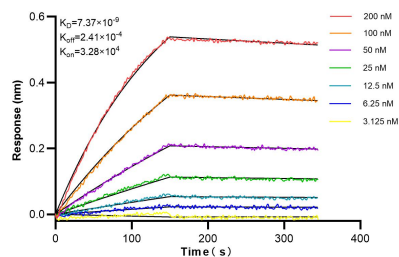
For technical support and original validation data for this product please contact:
T: 1 (888) 4PTGLAB (1-888-478-4522) (toll free in USA), or 1(312) 455-8498 (outside USA)
E: proteintech@ptglab.com
W: ptglab.com

This product is exclusively available under Proteintech Group brand and is not available to purchase from any other manufacturer.

Selected Validation Data



Various lysates were subjected to SDS PAGE followed by western blot with 85949-1-RR (SNAPIN antibody) at dilution of 1:10000 incubated at room temperature for 1.5 hours. This data was developed using the same antibody clone with 85949-1-PBS in a different storage buffer formulation.



Biolayer interferometry (BLI) kinetic assays of 85949-1-RR against Human SNAPIN were performed. The affinity constant is 7.37 nM.