

For Research Use Only

SNAPIN Recombinant antibody

Catalog Number: 85949-1-RR



Basic Information

Catalog Number:

85949-1-RR

Size:

100ul , Concentration: 1000 µg/ml by Nanodrop;

Source:

Rabbit

Isotype:

IgG

Immunogen Catalog Number:

AG0101

GenBank Accession Number:

BC000761

GeneID (NCBI):

23557

UNIPROT ID:

O95295

Full Name:

SNAP-associated protein

Calculated MW:

15 kDa

Observed MW:

15-18 kDa

Purification Method:

Protein A purification

CloneNo.:

250300F4

Recommended Dilutions:

WB: 1:5000-1:50000

Applications

Tested Applications:

WB, ELISA

Species Specificity:

human

Positive Controls:

WB : HEK-293 cells, A375 cells, SKOV-3 cells, DU 145 cells

Background Information

Snapi, a protein of relative molecular weight of 15kd, is implicated in neurotransmission by binding to SNAP-25. Snapi was enriched in neurons and exclusively located on synaptic vesicle membrane, which may be a PKA target for modulating transmitter release through the cAMP-dependent signal-transduction pathway. This antibody can recognize the 15-18kd(Monomer) and 30-36kd(Dimer) forms of SNAPIN.

Storage

Storage:

Store at -20°C. Stable for one year after shipment.

Storage Buffer:

PBS with 0.02% sodium azide and 50% glycerol, pH7.3

Aliquoting is unnecessary for -20°C storage

*** 20ul sizes contain 0.1% BSA

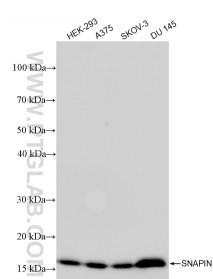
For technical support and original validation data for this product please contact:

T: 1 (888) 4PTGLAB (1-888-478-4522) (toll free in USA), or 1(312) 455-8498 (outside USA)

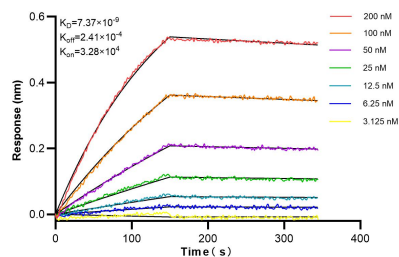
E: proteintech@ptglab.com
W: ptglab.com

This product is exclusively available under Proteintech Group brand and is not available to purchase from any other manufacturer.

Selected Validation Data



Various lysates were subjected to SDS PAGE followed by western blot with 85949-1-RR (SNAPIN antibody) at dilution of 1:10000 incubated at room temperature for 1.5 hours.



Biolayer interferometry (BLI) kinetic assays of 85949-1-RR against Human SNAPIN were performed. The affinity constant is 7.37 nM.