

For Research Use Only

CD58 Recombinant antibody, PBS Only (Capture)

Catalog Number: 85950-3-PBS



Basic Information

Catalog Number: 85950-3-PBS	GenBank Accession Number: BC005930	Purification Method: Protein A purification
Size: 100ug , Concentration: 1 mg/ml by Nanodrop;	GeneID (NCBI): 965	CloneNo.: 250250D9
Source: Rabbit	UNIPROT ID: P19256	
Isotype: IgG	Full Name: CD58 molecule	
Immunogen Catalog Number: EG4236	Calculated MW: 28 kDa	

Applications

Tested Applications:
Sandwich ELISA, Indirect ELISA, Sample test

Species Specificity:
human

Product Information

85950-3-PBS targets CD58 as part of a matched antibody pair:

MP02208-2: 85950-3-PBS capture and 85950-2-PBS detection (validated in Sandwich ELISA)

Unconjugated rabbit recombinant monoclonal antibody in PBS only (BSA and azide free) storage buffer at a concentration of 1 mg/mL, ready for conjugation. Created using Proteintech's proprietary in-house recombinant technology. Recombinant production enables unrivalled batch-to-batch consistency, easy scale-up, and future security of supply.

This conjugation ready format makes antibodies ideal for use in many applications including: ELISAs, multiplex assays requiring matched pairs, mass cytometry, and multiplex imaging applications. Antibody use should be optimized by the end user for each application and assay.

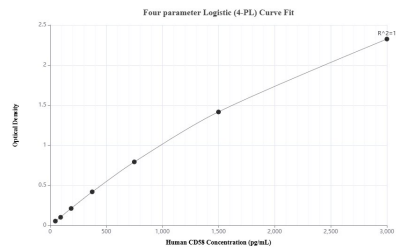
Storage

Storage:
Store at -80°C.
Storage Buffer:
PBS only, pH7.3

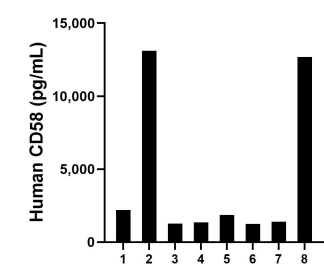
For technical support and original validation data for this product please contact:
T: 1 (888) 4PTGLAB (1-888-478-4522) (toll free in USA), or 1(312) 455-8498 (outside USA)
E: proteintech@ptglab.com
W: ptglab.com

This product is exclusively available under Proteintech Group brand and is not available to purchase from any other manufacturer.

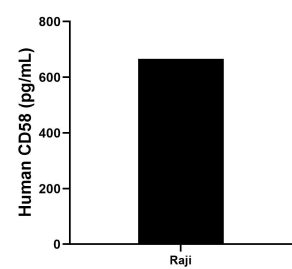
Selected Validation Data



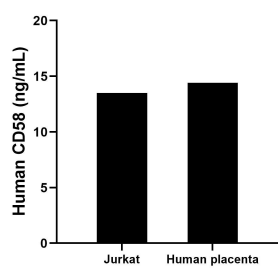
Sandwich ELISA standard curve of MP02208-2, Human CD58 Recombinant Matched Antibody Pair - PBS only. 85950-3-PBS was coated to a plate as the capture antibody and incubated with serial dilutions of standard Eg4236. 85950-2-PBS was HRP conjugated as the detection antibody. Range: 46.9-3000 pg/mL



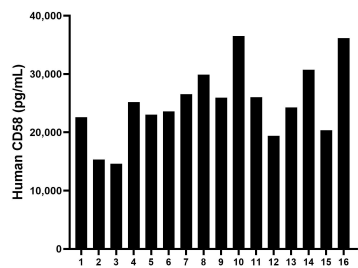
Urine of eight individual healthy human donors was measured. The human CD58 concentration of detected samples was determined to be 4,388.9 pg/mL with a range of 1,243.7 - 13,113.2 pg/mL



Raji human Burkitt's lymphoma cells (5×10^6 cells/mL) were cultured in RPMI supplemented with 10% fetal bovine serum, 2 mM L-glutamine, 100 U/mL penicillin, and 100 µg/mL streptomycin sulfate. An aliquot of the cell culture supernate was removed, assayed for human CD58, and measured 666.0 pg/mL



The mean CD58 concentration was determined to be 13.50 ng/mL in Jurkat cell extract based on a 2.2 mg/mL extract load and 14.40 ng/mL in human placenta tissue extract based on a 1.7 mg/mL extract load.



Serum of sixteen individual healthy human donors was measured. The human CD58 concentration of detected samples was determined to be 25,010.4 pg/mL with a range of 14,622.8 - 36,503.5 pg/mL