

For Research Use Only

Cyclophilin E Recombinant antibody, PBS Only

Catalog Number: 85952-1-PBS



Basic Information

Catalog Number:

85952-1-PBS

Size:

100ug , Concentration: 1 mg/ml by
Nanodrop;

Source:

Rabbit

Isotype:

IgG

Immunogen Catalog Number:

AG7603

GenBank Accession Number:

BC004898

GeneID (NCBI):

10450

UNIPROT ID:

Q9UNP9

Full Name:

peptidylprolyl isomerase E
(cyclophilin E)

Calculated MW:

33 kDa

Observed MW:

33 kDa

Purification Method:

Protein A purification

CloneNo.:

250296A6

Applications

Tested Applications:

WB, Indirect ELISA

Species Specificity:

human

Background Information

Cyclophilin E (CypE), also known as Cyclophilin-33, Rotamase E, CYP33, PPIE, is an enzyme which belongs to the cyclophilin-type PPIase family of PPIase E subfamily (PMID: 15998457). Cyclophilin E negatively regulates influenza virus replication and transcription occurs by impairing the formation of the vRNP (PMID: 21887220). Additionally, Cyclophilin E plays an important role in osteoblast differentiation as a positive regulator by increasing the transcriptional activity of Runx2 (PMID: 37947627).

Storage

Storage:

Store at -80°C.

Storage Buffer:

PBS only, pH7.3

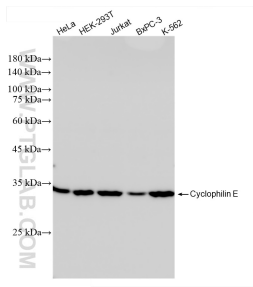
For technical support and original validation data for this product please contact:

T: 1 (888) 4PTGLAB (1-888-478-4522) (toll free
in USA), or 1(312) 455-8498 (outside USA)

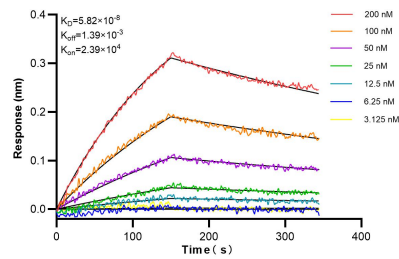
E: proteintech@ptglab.com
W: ptglab.com

This product is exclusively available under Proteintech Group brand and is not available to purchase from any other manufacturer.

Selected Validation Data



Various lysates were subjected to SDS PAGE followed by western blot with 85952-1-RR (Cyclophilin E antibody) at dilution of 1:5000 incubated at room temperature for 1.5 hours. This data was developed using the same antibody clone with 85952-1-PBS in a different storage buffer formulation.



Biolayer interferometry (BLI) kinetic assays of 85952-1-RR against Human Cyclophilin E were performed. The affinity constant is 58.2 nM.