

For Research Use Only

Cyclophilin E Recombinant antibody

Catalog Number: 85952-1-RR



Basic Information

Catalog Number:

85952-1-RR

Size:

100ul, Concentration: 1000 µg/ml by
Nanodrop;

Source:

Rabbit

Isotype:

IgG

Immunogen Catalog Number:

AG7603

GenBank Accession Number:

BC004898

GeneID (NCBI):

10450

UNIPROT ID:

Q9UNP9

Full Name:

peptidylprolyl isomerase E
(cyclophilin E)

Calculated MW:

33 kDa

Observed MW:

33 kDa

Purification Method:

Protein A purification

CloneNo.:

250296A6

Recommended Dilutions:

WB: 1:2000-1:10000

Applications

Tested Applications:

WB, ELISA

Species Specificity:

human

Positive Controls:

WB : HeLa cells, HEK-293T cells, Jurkat cells, BxPC-3
cells, K-562 cells

Background Information

Cyclophilin E (CypE), also known as Cyclophilin-33, Rotamase E, CYP33, PPIE, is an enzyme which belongs to the cyclophilin-type PPIase family of PPIase E subfamily (PMID: 15998457). Cyclophilin E negatively regulates influenza virus replication and transcription occurs by impairing the formation of the vRNP (PMID: 21887220). Additionally, Cyclophilin E plays an important role in osteoblast differentiation as a positive regulator by increasing the transcriptional activity of Runx2 (PMID: 37947627).

Storage

Storage:

Store at -20°C. Stable for one year after shipment.

Storage Buffer:

PBS with 0.02% sodium azide and 50% glycerol, pH7.3

Aliquoting is unnecessary for -20°C storage

*** 20ul sizes contain 0.1% BSA

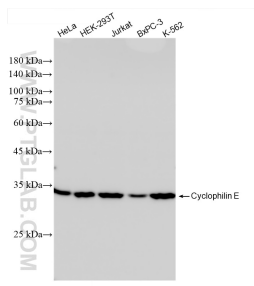
For technical support and original validation data for this product please contact:

T: 1 (888) 4PTGLAB (1-888-478-4522) (toll free
in USA), or 1(312) 455-8498 (outside USA)

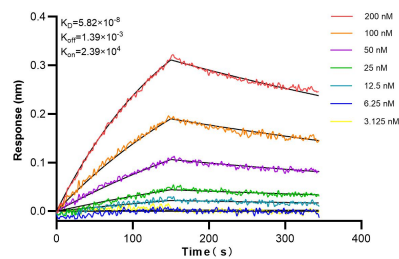
E: proteintech@ptglab.com
W: ptglab.com

This product is exclusively available under Proteintech
Group brand and is not available to purchase from any
other manufacturer.

Selected Validation Data



Various lysates were subjected to SDS PAGE followed by western blot with 85952-1-RR (Cyclophilin E antibody) at dilution of 1:5000 incubated at room temperature for 1.5 hours.



Biolayer interferometry (BLI) kinetic assays of 85952-1-RR against Human Cyclophilin E were performed. The affinity constant is 58.2 nM.