

For Research Use Only

RPS2 Recombinant antibody

Catalog Number: 85956-1-RR



Basic Information

Catalog Number: 85956-1-RR	GenBank Accession Number: BC066321	Purification Method: Protein A purification
Size: 100ul , Concentration: 1000 µg/ml by Nanodrop;	GeneID (NCBI): 6187	CloneNo.: 250165F12
Source: Rabbit	UNIPROT ID: P15880	Recommended Dilutions: WB: 1:5000-1:50000
Isotype: IgG	Full Name: ribosomal protein S2	
Immunogen Catalog Number: AG28322	Calculated MW: 31 kDa	
	Observed MW: 33 kDa	

Applications

Tested Applications: WB, ELISA	Positive Controls: WB : HeLa cells, A549 cells, HEK-293T cells, K-562 cells, MCF-7 cells
Species Specificity: human	

Background Information

RPS2 gene encodes a ribosomal protein that is a component of the 40S subunit. The protein belongs to the S5P family of ribosomal proteins. It is located in the cytoplasm. This gene shares sequence similarity with mouse LLRep3. It is co-transcribed with the small nucleolar RNA gene U64, which is located in its third intron. As is typical for genes encoding ribosomal proteins, there are multiple processed pseudogenes of this gene dispersed through the genome. [provided by RefSeq, Jul 2008]

Storage

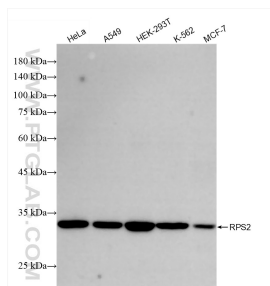
Storage:
Store at -20°C. Stable for one year after shipment.
Storage Buffer:
PBS with 0.02% sodium azide and 50% glycerol, pH7.3
Aliquoting is unnecessary for -20°C storage

*** 20ul sizes contain 0.1% BSA

For technical support and original validation data for this product please contact:
T: 1 (888) 4PTGLAB (1-888-478-4522) (toll free in USA), or 1(312) 455-8498 (outside USA)
E: proteintech@ptglab.com
W: ptglab.com

This product is exclusively available under Proteintech Group brand and is not available to purchase from any other manufacturer.

Selected Validation Data



Various lysates were subjected to SDS PAGE followed by western blot with 85956-1-RR (RPS2 antibody) at dilution of 1:10000 incubated at room temperature for 1.5 hours.