

For Research Use Only

SLC22A15 Recombinant antibody

Catalog Number: 85960-1-RR



Basic Information

Catalog Number:

85960-1-RR

Size:

100ul , Concentration: 1000 µg/ml by Nanodrop;

Source:

Rabbit

Isotype:

IgG

Immunogen Catalog Number:

AG14547

GenBank Accession Number:

BC026358

GeneID (NCBI):

55356

UNIPROT ID:

Q8IZD6

Full Name:

solute carrier family 22, member 15

Calculated MW:

535aa,59 kDa; 547aa,61 kDa

Observed MW:

61-66 kDa

Purification Method:

Protein A purification

CloneNo.:

250347G3

Recommended Dilutions:

WB: 1:2000-1:10000

Applications

Tested Applications:

WB, ELISA

Species Specificity:

human, mouse, rat

Positive Controls:

WB : HEK-293 cells, THP-1 cells, mouse kidney tissue, rat kidney tissue, mouse brain tissue, rat brain tissue

Storage

Storage:

Store at -20°C. Stable for one year after shipment.

Storage Buffer:

PBS with 0.02% sodium azide and 50% glycerol, pH7.3

Aliquoting is unnecessary for -20°C storage

*** 20ul sizes contain 0.1% BSA

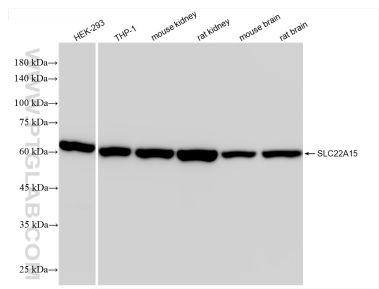
For technical support and original validation data for this product please contact:

T: 1 (888) 4PTGLAB (1-888-478-4522) (toll free in USA), or 1(312) 455-8498 (outside USA)

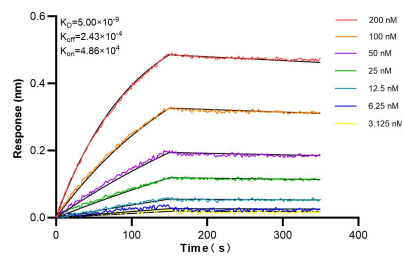
E: proteintech@ptglab.com
W: ptglab.com

This product is exclusively available under Proteintech Group brand and is not available to purchase from any other manufacturer.

Selected Validation Data



Various lysates were subjected to SDS PAGE followed by western blot with 85960-1-RR (SLC22A15 antibody) at dilution of 1:5000 incubated at room temperature for 1.5 hours.



Biolayer interferometry (BLI) kinetic assays of 85960-1-RR against Human SLC22A15 were performed. The affinity constant is 5.00 nM.