

For Research Use Only

# ENPEP Recombinant antibody, PBS Only

Catalog Number: 85963-1-PBS



## Basic Information

<b>Catalog Number:</b> 85963-1-PBS	<b>GenBank Accession Number:</b> NM_001977.3	<b>Purification Method:</b> Protein A purification
<b>Size:</b> 100ug, Concentration: 1 mg/ml by Nanodrop;	<b>GeneID (NCBI):</b> 2028	<b>CloneNo.:</b> 250264B6
<b>Source:</b> Rabbit	<b>UNIPROT ID:</b> Q07075	
<b>Isotype:</b> IgG	<b>Full Name:</b> glutamyl aminopeptidase (aminopeptidase A)	
<b>Immunogen Catalog Number:</b> EG2736	<b>Calculated MW:</b> 109 kDa	
	<b>Observed MW:</b> 140 kDa	

## Applications

**Tested Applications:**  
WB, Indirect ELISA

**Species Specificity:**  
human, mouse, rat

## Background Information

ENPEP is the gene encoding the protein glutamyl aminopeptidase, also known as aminopeptidase A (APA), human kidney differentiation antigen (gp160). A type 2 membrane zinc metalloenzyme, APA is a general-purpose protease that primarily serves to cleave the acidic N-terminal aspartate and glutamyl residues of a variety of peptides, most significantly angiotensin 2 (ANG2, ang1-8), cholecystokinin-8 (CCK8), and neurokinin A. The presence of Ca<sup>2+</sup> augments both the enzymatic efficiency and specificity of APA, increasing its selectivity towards the aforementioned acidic amino acids. Conversely, in the absence of calcium, APA can bind a wider range of N-terminal neutral and basic amino acids, some of which are cleaved, while others bind without proteolysis.

## Storage

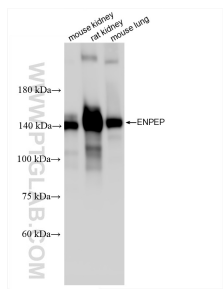
**Storage:**  
Store at -80°C.

**Storage Buffer:**  
PBS only, pH7.3

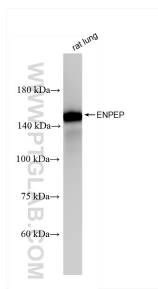
For technical support and original validation data for this product please contact:  
T: 1 (888) 4PTGLAB (1-888-478-4522) (toll free in USA), or 1(312) 455-8498 (outside USA)  
E: [proteintech@ptglab.com](mailto:proteintech@ptglab.com)  
W: [ptglab.com](http://ptglab.com)

This product is exclusively available under Proteintech Group brand and is not available to purchase from any other manufacturer.

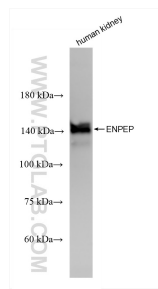
## Selected Validation Data



Various lysates were subjected to SDS PAGE followed by western blot with 85963-1-RR (ENPEP antibody) at dilution of 1:1000 incubated at room temperature for 1.5 hours. This data was developed using the same antibody clone with 85963-1-PBS in a different storage buffer formulation.



rat lung tissue were subjected to SDS PAGE followed by western blot with 85963-1-RR (ENPEP antibody) at dilution of 1:1000 incubated at room temperature for 1.5 hours. This data was developed using the same antibody clone with 85963-1-PBS in a different storage buffer formulation.



human kidney tissue were subjected to SDS PAGE followed by western blot with 85963-1-RR (ENPEP antibody) at dilution of 1:1000 incubated at room temperature for 1.5 hours. This data was developed using the same antibody clone with 85963-1-PBS in a different storage buffer formulation.