

For Research Use Only

ENPEP Recombinant antibody

Catalog Number: 85963-1-RR



Basic Information

Catalog Number: 85963-1-RR	GenBank Accession Number: NM_001977.3	Purification Method: Protein A purification
Size: 100ul , Concentration: 1000 µg/ml by Nanodrop;	GeneID (NCBI): 2028	CloneNo.: 250264B6
Source: Rabbit	UNIPROT ID: Q07075	Recommended Dilutions: WB 1:1000-1:2000
Isotype: IgG	Full Name: glutamyl aminopeptidase (aminopeptidase A)	
Immunogen Catalog Number: EG2736	Calculated MW: 109 kDa	
	Observed MW: 140 kDa	

Applications

Tested Applications: WB, ELISA	Positive Controls:
Species Specificity: human, mouse, rat	WB : mouse kidney tissue, human kidney tissue, rat lung tissue, rat kidney tissue, mouse lung tissue, =

Background Information

ENPEP is the gene encoding the protein glutamyl aminopeptidase, also known as aminopeptidase A (APA), human kidney differentiation antigen (gp160). A type 2 membrane zinc metalloenzyme, APA is a general-purpose protease that primarily serves to cleave the acidic N-terminal aspartate and glutamyl residues of a variety of peptides, most significantly angiotensin 2 (ANG2, ang1-8), cholecystokinin-8 (CCK8), and neurokinin A. The presence of Ca²⁺ augments both the enzymatic efficiency and specificity of APA, increasing its selectivity towards the aforementioned acidic amino acids. Conversely, in the absence of calcium, APA can bind a wider range of N-terminal neutral and basic amino acids, some of which are cleaved, while others bind without proteolysis.

Storage

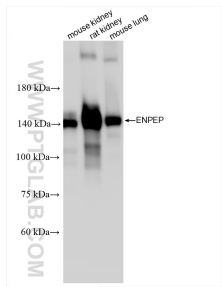
Storage:
Store at -20°C. Stable for one year after shipment.
Storage Buffer:
PBS with 0.02% sodium azide and 50% glycerol, pH7.3
Aliquoting is unnecessary for -20°C storage

*** 20ul sizes contain 0.1% BSA

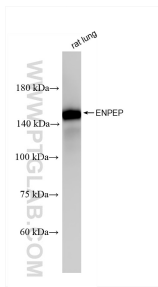
For technical support and original validation data for this product please contact:
T: 1 (888) 4PTGLAB (1-888-478-4522) (toll free in USA), or 1(312) 455-8498 (outside USA)
E: proteintech@ptglab.com
W: ptglab.com

This product is exclusively available under Proteintech Group brand and is not available to purchase from any other manufacturer.

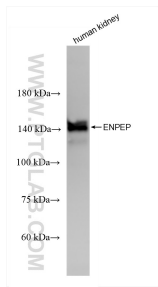
Selected Validation Data



Various lysates were subjected to SDS PAGE followed by western blot with 85963-1-RR (ENPEP antibody) at dilution of 1:1000 incubated at room temperature for 1.5 hours.



rat lung tissue were subjected to SDS PAGE followed by western blot with 85963-1-RR (ENPEP antibody) at dilution of 1:1000 incubated at room temperature for 1.5 hours.



human kidney tissue were subjected to SDS PAGE followed by western blot with 85963-1-RR (ENPEP antibody) at dilution of 1:1000 incubated at room temperature for 1.5 hours.