

For Research Use Only

Cathepsin D Recombinant antibody

Catalog Number: 85964-1-RR



Basic Information

Catalog Number: 85964-1-RR	GenBank Accession Number: NM_009983.3	Purification Method: Protein A purification
Size: 100ul , Concentration: 1000 µg/ml by Nanodrop;	GeneID (NCBI): 13033	CloneNo.: 250329A3
Source: Rabbit	UNIPROT ID: P18242	Recommended Dilutions: WB 1:2000-1:10000
Isotype: IgG	Full Name: cathepsin D	
Immunogen Catalog Number: EG2986	Calculated MW: 45 kDa	
	Observed MW: 46 kDa, 28 kDa	

Applications

Tested Applications: WB, ELISA	Positive Controls: WB : Neuro-2a cells, RAW 264.7 cells, NIH/3T3 cells
Species Specificity: mouse	

Background Information

CTSD (Cathepsin D) also named CPSD, is a representative aspartic proteinase in lysosomes and is widely distributed in various tissue cells of mammals. The expression level of CTSD varies depending on the tissue, whereas neurons in CNS tissues possess abundant CTSD. CTSD is synthesized as a 52-kDa precursor that is converted into an active ~48-kDa single-chain intermediate in the endosomes, and then into a fully active mature form, composed of a 28-kDa heavy chain and a 14-kDa light chain, in the lysosomes (PMID: 10995834, PMID: 7641679, PMID: 30051532).

Storage

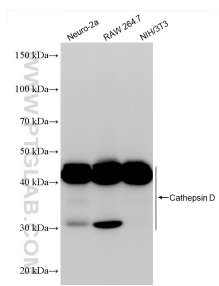
Storage:
Store at -20°C. Stable for one year after shipment.
Storage Buffer:
PBS with 0.02% sodium azide and 50% glycerol, pH7.3
Aliquoting is unnecessary for -20°C storage

*** 20ul sizes contain 0.1% BSA

For technical support and original validation data for this product please contact:
T: 1 (888) 4PTGLAB (1-888-478-4522) (toll free in USA), or 1(312) 455-8498 (outside USA)
E: proteintech@ptglab.com
W: ptglab.com

This product is exclusively available under Proteintech Group brand and is not available to purchase from any other manufacturer.

Selected Validation Data



Various lysates were subjected to SDS PAGE followed by western blot with 85964-1-RR (Cathepsin D antibody) at dilution of 1:5000 incubated at room temperature for 1.5 hours.