

For Research Use Only

Mouse CtSD Recombinant antibody, PBS Only (Detector)

Catalog Number: 85964-2-PBS



Basic Information

Catalog Number: 85964-2-PBS	GenBank Accession Number: NM_009983.3	Purification Method: Protein A purification
Size: 100ug , Concentration: 1 mg/ml by Nanodrop;	GeneID (NCBI): 13033	CloneNo.: 250329F11
Source: Rabbit	UNIPROT ID: P18242	
Isotype: IgG	Full Name: cathepsin D	
Immunogen Catalog Number: EG2986	Calculated MW: 45 kDa	

Applications

Tested Applications:
Cytometric bead array, Indirect ELISA, Sample test

Species Specificity:
mouse

Product Information

85964-2-PBS targets CtSD as part of a matched antibody pair.

MP02204-1: 85964-3-PBS capture and 85964-2-PBS detection (validated in Cytometric bead array)

Unconjugated rabbit recombinant monoclonal antibody in PBS only (BSA and azide free) storage buffer at a concentration of 1 mg/mL, ready for conjugation. Created using Proteintech's proprietary in-house recombinant technology. Recombinant production enables unrivalled batch-to-batch consistency, easy scale-up, and future security of supply.

This conjugation ready format makes antibodies ideal for use in many applications including: ELISAs, multiplex assays requiring matched pairs, mass cytometry, and multiplex imaging applications. Antibody use should be optimized by the end user for each application and assay.

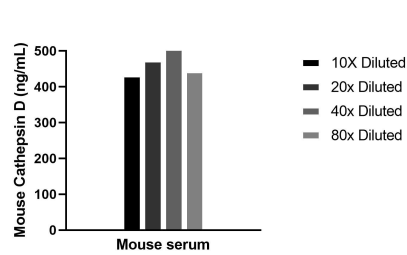
Storage

Storage:
Store at -80°C.
Storage Buffer:
PBS only, pH7.3

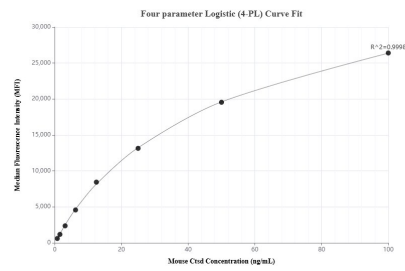
For technical support and original validation data for this product please contact:
T: 1 (888) 4PTGLAB (1-888-478-4522) (toll free in USA), or 1(312) 455-8498 (outside USA)
E: proteintech@ptglab.com
W: ptglab.com

This product is exclusively available under Proteintech Group brand and is not available to purchase from any other manufacturer.

Selected Validation Data



The mean Cathepsin D concentration was determined to be 470.8 ng/mL in mouse serum.



Cytometric bead array standard curve of MP02204-1, MOUSE Cathepsin D Recombinant Matched Antibody Pair, PBS Only. Capture antibody: 85964-3-PBS. Detection antibody: 85964-2-PBS. Standard: Eg2986. Range: 0.781-100 ng/mL