

For Research Use Only

Mouse Ctcd Recombinant antibody, PBS Only (Capture)

Catalog Number: 85964-4-PBS



Basic Information

Catalog Number: 85964-4-PBS	GenBank Accession Number: NM_009983.3	Purification Method: Protein A purification
Size: 100ug, Concentration: 1 mg/ml by Nanodrop;	GeneID (NCBI): 13033	CloneNo.: 250329D6
Source: Rabbit	UNIPROT ID: P18242	
Isotype: IgG	Full Name: cathepsin D	
Immunogen Catalog Number: EG2986	Calculated MW: 45 kDa	

Applications

Tested Applications:
Sandwich ELISA, Indirect ELISA, Sample test

Species Specificity:
mouse

Product Information

85964-4-PBS targets Ctcd as part of a matched antibody pair.

MP02204-2: 85964-4-PBS capture and 85964-1-PBS detection (validated in Sandwich ELISA)

Unconjugated rabbit recombinant monoclonal antibody in PBS only (BSA and azide free) storage buffer at a concentration of 1 mg/mL, ready for conjugation. Created using Proteintech's proprietary in-house recombinant technology. Recombinant production enables unrivalled batch-to-batch consistency, easy scale-up, and future security of supply.

This conjugation ready format makes antibodies ideal for use in many applications including: ELISAs, multiplex assays requiring matched pairs, mass cytometry, and multiplex imaging applications. Antibody use should be optimized by the end user for each application and assay.

Storage

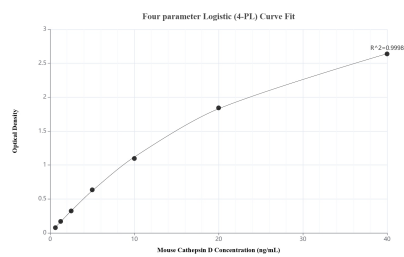
Storage:
Store at -80°C.

Storage Buffer:
PBS only, pH7.3

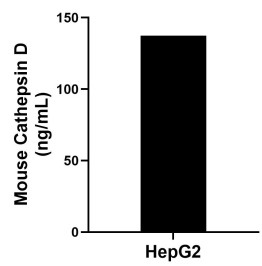
For technical support and original validation data for this product please contact:
T: 1 (888) 4PTGLAB (1-888-478-4522) (toll free in USA), or 1(312) 455-8498 (outside USA)
E: proteintech@ptglab.com
W: ptglab.com

This product is exclusively available under Proteintech Group brand and is not available to purchase from any other manufacturer.

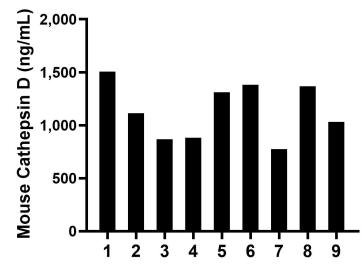
Selected Validation Data



Sandwich ELISA standard curve of MP02204-2, Human Cathepsin D Recombinant Matched Antibody Pair - PBS only. 85964-4-PBS was coated to a plate as the capture antibody and incubated with serial dilutions of standard Eg2986. 85964-1-PBS was HRP conjugated as the detection antibody. Range: 0.625-40 ng/mL



The mean Cathepsin D concentration was determined to be 137.30 ng/mL in HepG2 cell extract based on a 0.90 mg/mL extract load.



Serum of nine mice was measured. The Cathepsin D concentration of detected samples was determined to be 1,136.75 ng/mL with a range of 773.75-1,505.92 pg/mL