

For Research Use Only

# Mouse S100a8 Recombinant antibody, PBS Only (Detector)

Catalog Number: 85972-1-PBS



## Basic Information

<b>Catalog Number:</b> 85972-1-PBS	<b>GenBank Accession Number:</b> NM_013650.2	<b>Purification Method:</b> Protein A purification
<b>Size:</b> 100ug , Concentration: 1 mg/ml by Nanodrop;	<b>GeneID (NCBI):</b> 20201	<b>CloneNo.:</b> 250113B2
<b>Source:</b> Rabbit	<b>UNIPROT ID:</b> P27005	
<b>Isotype:</b> IgG	<b>Full Name:</b> S100 calcium binding protein A8 (calgranulin A)	
<b>Immunogen Catalog Number:</b> EG2959	<b>Calculated MW:</b> 10 kDa	

## Applications

**Tested Applications:**  
Cytometric bead array, Indirect ELISA, Sample test

**Species Specificity:**  
mouse

## Product Information

85972-1-PBS targets S100a8 as part of a matched antibody pair:

MP02237-1: 85972-2-PBS capture and 85972-1-PBS detection (validated in Cytometric bead array)

Unconjugated rabbit recombinant monoclonal antibody in PBS only (BSA and azide free) storage buffer at a concentration of 1 mg/mL, ready for conjugation. Created using Proteintech's proprietary in-house recombinant technology. Recombinant production enables unrivalled batch-to-batch consistency, easy scale-up, and future security of supply.

This conjugation ready format makes antibodies ideal for use in many applications including: ELISAs, multiplex assays requiring matched pairs, mass cytometry, and multiplex imaging applications. Antibody use should be optimized by the end user for each application and assay.

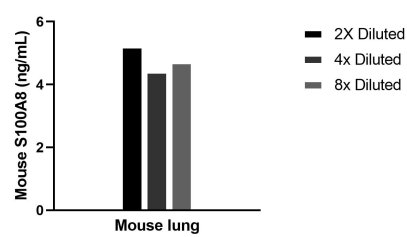
## Storage

**Storage:**  
Store at -80°C.  
**Storage Buffer:**  
PBS only, pH7.3

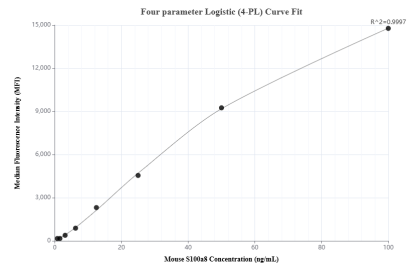
For technical support and original validation data for this product please contact:  
T: 1 (888) 4PTGLAB (1-888-478-4522) (toll free in USA), or 1(312) 455-8498 (outside USA)  
E: [proteintech@ptglab.com](mailto:proteintech@ptglab.com)  
W: [ptglab.com](http://ptglab.com)

This product is exclusively available under Proteintech Group brand and is not available to purchase from any other manufacturer.

## Selected Validation Data



Mouse lung conditioned media cultured in RPMI supplemented with 10% fetal bovine serum was collected after culturing for 5 days. An aliquot of the cell culture supernate was removed, assayed for mouse S100A8 and measured 4.7 ng/mL



Cytometric bead array standard curve of MP02237-1, MOUSE S100A8 Recombinant Matched Antibody Pair, PBS Only. Capture antibody: 85972-2-PBS. Detection antibody: 85972-1-PBS. Standard: Eg2959. Range: 1.563-100 ng/mL