

For Research Use Only

# Mouse S100a8 Recombinant antibody, PBS Only (Capture)

Catalog Number: 85972-2-PBS



## Basic Information

<b>Catalog Number:</b> 85972-2-PBS	<b>GenBank Accession Number:</b> NM_013650.2	<b>Purification Method:</b> Protein A purification
<b>Size:</b> 100ug , Concentration: 1 mg/ml by Nanodrop;	<b>GeneID (NCBI):</b> 20201	<b>CloneNo.:</b> 250113D6
<b>Source:</b> Rabbit	<b>UNIPROT ID:</b> P27005	
<b>Isotype:</b> IgG	<b>Full Name:</b> S100 calcium binding protein A8 (calgranulin A)	
<b>Immunogen Catalog Number:</b> EG2959	<b>Calculated MW:</b> 10 kDa	

## Applications

**Tested Applications:**  
Cytometric bead array, Indirect ELISA, Sample test

**Species Specificity:**  
mouse

## Product Information

85972-2-PBS targets S100a8 as part of a matched antibody pair:

MP02237-1: 85972-2-PBS capture and 85972-1-PBS detection (validated in Cytometric bead array)

Unconjugated rabbit recombinant monoclonal antibody in PBS only (BSA and azide free) storage buffer at a concentration of 1 mg/mL, ready for conjugation. Created using Proteintech's proprietary in-house recombinant technology. Recombinant production enables unrivalled batch-to-batch consistency, easy scale-up, and future security of supply.

This conjugation ready format makes antibodies ideal for use in many applications including: ELISAs, multiplex assays requiring matched pairs, mass cytometry, and multiplex imaging applications. Antibody use should be optimized by the end user for each application and assay.

## Storage

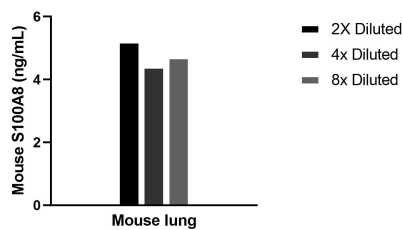
**Storage:**  
Store at -80°C.

**Storage Buffer:**  
PBS only, pH7.3

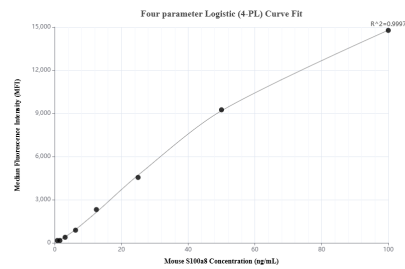
For technical support and original validation data for this product please contact:  
T: 1 (888) 4PTGLAB (1-888-478-4522) (toll free in USA), or 1(312) 455-8498 (outside USA)  
E: [proteintech@ptglab.com](mailto:proteintech@ptglab.com)  
W: [ptglab.com](http://ptglab.com)

This product is exclusively available under Proteintech Group brand and is not available to purchase from any other manufacturer.

Selected Validation Data



Mouse lung conditioned media cultured in RPMI supplemented with 10% fetal bovine serum was collected after culturing for 5 days. An aliquot of the cell culture supernate was removed, assayed for mouse S100A8 and measured 4.7 ng/mL



Cytometric bead array standard curve of MP02237-1, MOUSE S100A8 Recombinant Matched Antibody Pair, PBS Only. Capture antibody: 85972-2-PBS. Detection antibody: 85972-1-PBS. Standard: Eg2959. Range: 1.563-100 ng/mL