

For Research Use Only

SFXN3 Recombinant antibody

Catalog Number: 85978-1-RR



Basic Information

Catalog Number:

85978-1-RR

Size:

100ul, Concentration: 1000 µg/ml by Nanodrop;

Source:

Rabbit

Isotype:

IgG

Immunogen Catalog Number:

AG7203

GenBank Accession Number:

BC000124

GeneID (NCBI):

81855

UNIPROT ID:

Q9BWM7

Full Name:

sideroflexin 3

Calculated MW:

36 kDa

Observed MW:

36 kDa

Purification Method:

Protein A purification

CloneNo.:

250485B6

Recommended Dilutions:

WB: 1:5000-1:50000

IF/ICC: 1:400-1:1600

Applications

Tested Applications:

WB, IF/ICC, ELISA

Species Specificity:

human, mouse, rat

Positive Controls:

WB : Recombinant protein, BxPC-3 cells, NIH/3T3 cells, Neuro-2a cells, C6 cells, mouse brain tissue, rat brain tissue

IF/ICC : C6 cells,

Background Information

SFXN3, a mitochondrial membrane protein, is a member of sideroflexin family. Serum anti-SFXN3 autoantibody was elevated in early stage of the oral squamous cell carcinoma significantly, indicating its clinical value for diagnosis of oral squamous cell carcinoma.

Storage

Storage:

Store at -20°C. Stable for one year after shipment.

Storage Buffer:

PBS with 0.02% sodium azide and 50% glycerol, pH7.3

Aliquoting is unnecessary for -20°C storage

*** 20ul sizes contain 0.1% BSA

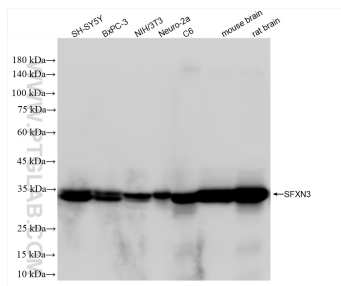
For technical support and original validation data for this product please contact:

T: 1 (888) 4PTGLAB (1-888-478-4522) (toll free in USA), or 1(312) 455-8498 (outside USA)

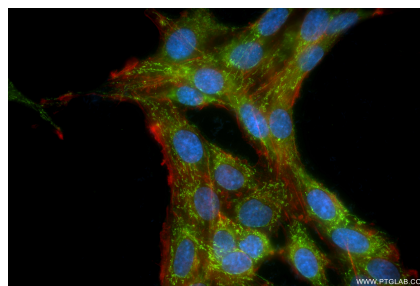
E: proteintech@ptglab.com
W: ptglab.com

This product is exclusively available under Proteintech Group brand and is not available to purchase from any other manufacturer.

Selected Validation Data



Various lysates were subjected to SDS PAGE followed by western blot with 85978-1-RR (SFXN3 antibody) at dilution of 1:10000 incubated at room temperature for 1.5 hours.



Immunofluorescent analysis of (4% PFA) fixed C6 cells using SFXN3 antibody (85978-1-RR, Clone: 250485B6) at dilution of 1:800 and CoraLite®488-Conjugated Goat Anti-Rabbit IgG(H+L) (SA00013-2), CL594-Phalloidin (red).