

For Research Use Only

# ALDH1L1 Recombinant antibody, PBS Only

Catalog Number: 85980-2-PBS



## Basic Information

### Catalog Number:

85980-2-PBS

### Size:

100ug, Concentration: 1 mg/ml by Nanodrop;

### Source:

Rabbit

### Isotype:

IgG

### Immunogen Catalog Number:

AG11285

### GenBank Accession Number:

BC027241

### GeneID (NCBI):

10840

### UNIPROT ID:

O75891

### Full Name:

aldehyde dehydrogenase 1 family, member L1

### Calculated MW:

99 kDa

### Observed MW:

100 kDa

### Purification Method:

Protein A purification

### CloneNo.:

250565B12

## Applications

### Tested Applications:

WB, IF/ICC, Indirect ELISA

### Species Specificity:

human, mouse, rat

## Background Information

Aldehyde dehydrogenase 1 family member L1 (ALDH1L1), belongs to the aldehyde dehydrogenase family of proteins and is responsible for formate oxidation in vivo. Loss of ALDH1L1 is associated with decreased apoptosis, increased cell motility, and cancer progression. ALDH1L1 catalyzes the conversion of 10-formyltetrahydrofolate, nicotinamide adenine dinucleotide phosphate (NADP<sup>+</sup>), and water to tetrahydrofolate, NADPH, and carbon dioxide. ALDH1L1 has some isoforms with MW of 99, 88 and 55 kDa.

## Storage

### Storage:

Store at -80°C.

### Storage Buffer:

PBS only, pH7.3

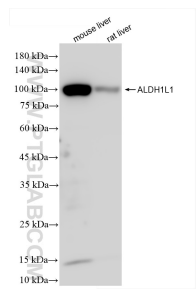
For technical support and original validation data for this product please contact:

T: 1 (888) 4PTGLAB (1-888-478-4522) (toll free in USA), or 1(312) 455-8498 (outside USA)

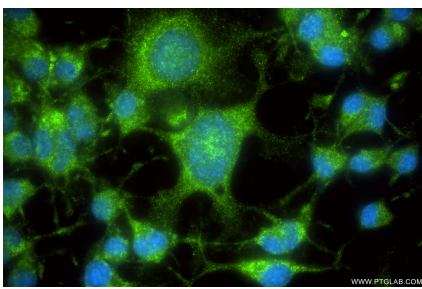
E: [proteintech@ptglab.com](mailto:proteintech@ptglab.com)  
W: [ptglab.com](http://ptglab.com)

This product is exclusively available under Proteintech Group brand and is not available to purchase from any other manufacturer.

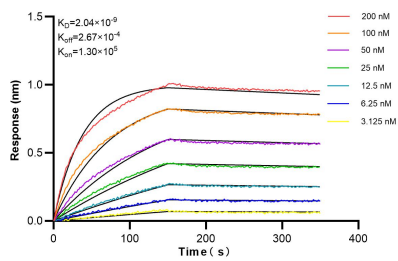
## Selected Validation Data



mouse liver tissue were subjected to SDS PAGE followed by western blot with 85980-2-RR (ALDH1L1 antibody) at dilution of 1:10000 incubated at room temperature for 1.5 hours. This data was developed using the same antibody clone with 85980-2-PBS in a different storage buffer formulation.



Immunofluorescent analysis of (-20°C Ethanol) fixed Neuro-2a cells using ALDH1L1 antibody (85980-2-RR, Clone: 250565B12 ) at dilution of 1:500 and CoraLite® 488-Conjugated Goat Anti-Rabbit IgG(H+L) (SA00013-2). This data was developed using the same antibody clone with 85980-2-PBS in a different storage buffer formulation.



Biolayer interferometry (BLI) kinetic assays of 85980-2-RR against Human ALDH1L1 were performed. The affinity constant is 2.04 nM.