

For Research Use Only

KIFC1 Recombinant antibody

Catalog Number: 85981-1-RR



Basic Information

Catalog Number: 85981-1-RR	GenBank Accession Number: BC000712	Purification Method: Protein A purification
Size: 100ul , Concentration: 1000 µg/ml by Nanodrop;	GeneID (NCBI): 3833	CloneNo.: 250588F10
Source: Rabbit	UNIPROT ID: Q9BW19	Recommended Dilutions: WB: 1:2000-1:10000 IHC: 1:400-1:1600 IF/ICC: 1:200-1:800
Isotype: IgG	Full Name: kinesin family member C1	
Immunogen Catalog Number: AG14492	Calculated MW: 673 aa, 74 kDa	
	Observed MW: 74 kDa	

Applications

Tested Applications: WB, IHC, IF/ICC, ELISA	Positive Controls:
Species Specificity: human, mouse	WB : HeLa cells, NIH/3T3 cells
Note-IHC: suggested antigen retrieval with TE buffer pH 9.0; (*) Alternatively, antigen retrieval may be performed with citrate buffer pH 6.0	IHC : mouse testis tissue, human placenta tissue
	IF/ICC : HeLa cells,

Background Information

KIFC1 is a molecular motor protein belonging to the kinesin-14 family that has motor domains at the C-terminus. KIFC1 is widely distributed, with highest expression in testis and participating in acrosome biogenesis and vesicle transport. It is also abundant in ovary, spleen, and liver. KIFC1 proteins are generally localized in the perinuclear region, and have been found to be involved chromosome alignment, congression and intracellular DNA transport (PMID: 12826589, PMID: 15236353, PMID: 23543461).

Storage

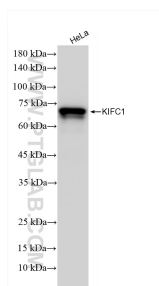
Storage:
Store at -20°C. Stable for one year after shipment.
Storage Buffer:
PBS with 0.02% sodium azide and 50% glycerol, pH7.3
Aliquoting is unnecessary for -20°C storage

*** 20ul sizes contain 0.1% BSA

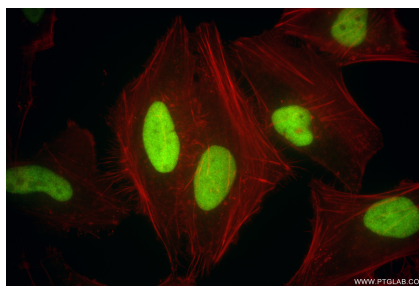
For technical support and original validation data for this product please contact:
T: 1 (888) 4PTGLAB (1-888-478-4522) (toll free in USA), or 1(312) 455-8498 (outside USA)
E: proteintech@ptglab.com
W: ptglab.com

This product is exclusively available under Proteintech Group brand and is not available to purchase from any other manufacturer.

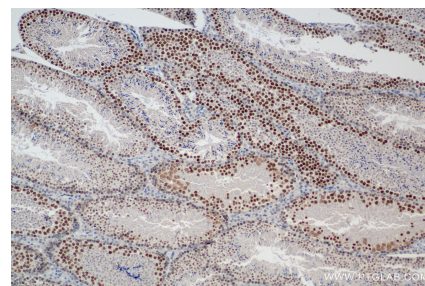
Selected Validation Data



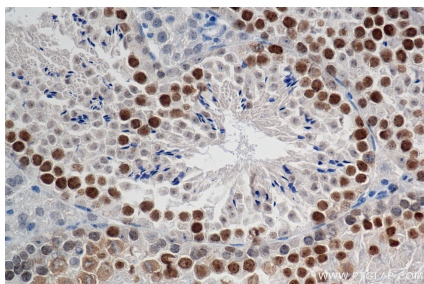
HeLa cells were subjected to SDS PAGE followed by western blot with 85981-1-RR (KIFC1 antibody) at dilution of 1:5000 incubated at room temperature for 1.5 hours.



Immunofluorescent analysis of (4% PFA) fixed HeLa cells using KIFC1 antibody (85981-1-RR, Clone: 250588F10) at dilution of 1:400 and CoraLite® 488-Conjugated Goat Anti-Rabbit IgG(H+L) (SA00013-2), CL594-Phalloidin (red).



Immunohistochemical analysis of paraffin-embedded mouse testis tissue slide using 85981-1-RR (KIFC1 antibody) at dilution of 1:800 (under 10x lens). Heat mediated antigen retrieval with Tris-EDTA buffer (pH 9.0).



Immunohistochemical analysis of paraffin-embedded mouse testis tissue slide using 85981-1-RR (KIFC1 antibody) at dilution of 1:800 (under 40x lens). Heat mediated antigen retrieval with Tris-EDTA buffer (pH 9.0).