

For Research Use Only

# IFI30 Recombinant antibody, PBS Only

Catalog Number: 85982-1-PBS



## Basic Information

Catalog Number:

85982-1-PBS

Size:

100ug , Concentration: 1 mg/ml by Nanodrop;

Source:

Rabbit

Isotype:

IgG

Immunogen Catalog Number:

AG2178

GenBank Accession Number:

BC021136

GeneID (NCBI):

10437

UNIPROT ID:

P13284

Full Name:

interferon, gamma-inducible protein 30

Calculated MW:

261 aa, 29 kDa

Observed MW:

30-35 kDa

Purification Method:

Protein A purification

CloneNo.:

250400A4

## Applications

Tested Applications:

WB, Indirect ELISA

Species Specificity:

human, rat

## Background Information

IFI30(interferon, gamma-inducible protein 30) is also named as IP30, GILT, IFI-30, MGC32056, IFI30 and belongs to the GILT family. It can facilitate the processing and presentation to antigen-specific T cells of protein antigens containing disulfide bonds. IFI30 is inducibly up-regulated by IFN-g, as are MHC class II molecules, the associated invariant chain, and HLA-DM, which catalyses peptide loading in MHCs and the 35 kDa species is the IFI30 proform, and the 30-kDa species is the mature form(PMID:10639150). It can exist as a dimer(PMID:17142755).

## Storage

Storage:

Store at -80°C.

Storage Buffer:

PBS only, pH7.3

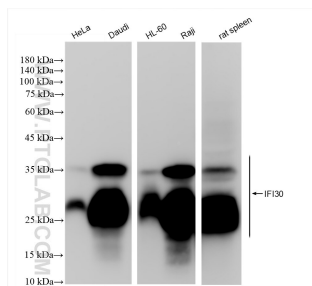
For technical support and original validation data for this product please contact:

T: 1 (888) 4PTGLAB (1-888-478-4522) (toll free in USA), or 1(312) 455-8498 (outside USA)

E: [proteintech@ptglab.com](mailto:proteintech@ptglab.com)  
W: [ptglab.com](http://ptglab.com)

This product is exclusively available under Proteintech Group brand and is not available to purchase from any other manufacturer.

## Selected Validation Data



Various lysates were subjected to SDS PAGE followed by western blot with 85982-1-RR (IFI30 antibody) at dilution of 1:10000 incubated at room temperature for 1.5 hours. This data was developed using the same antibody clone with 85982-1-PBS in a different storage buffer formulation.