

For Research Use Only

IFI30 Recombinant antibody

Catalog Number: 85982-1-RR



Basic Information

Catalog Number: 85982-1-RR	GenBank Accession Number: BC021136	Purification Method: Protein A purification
Size: 100ul , Concentration: 1000 µg/ml by Nanodrop;	GeneID (NCBI): 10437	CloneNo.: 250400A4
Source: Rabbit	UNIPROT ID: P13284	Recommended Dilutions: WB: 1:5000-1:50000
Isotype: IgG	Full Name: interferon, gamma-inducible protein 30	
Immunogen Catalog Number: AG2178	Calculated MW: 261 aa, 29 kDa	
	Observed MW: 30-35 kDa	

Applications

Tested Applications: WB, ELISA	Positive Controls: WB : HeLa cells, Daudi cells, HL-60 cells, Raji cells, rat spleen tissue
Species Specificity: human, rat	

Background Information

IFI30(interferon, gamma-inducible protein 30) is also named as IP30, GILT, IFI-30, MGC32056, IFI30 and belongs to the GILT family. It can facilitate the processing and presentation to antigen-specific T cells of protein antigens containing disulfide bonds. IFI30 is inducibly up-regulated by IFN-g, as are MHC class II molecules, the associated invariant chain, and HLA-DM, which catalyses peptide loading in MHCs and the 35 kDa species is the IFI30 proform, and the 30-kDa species is the mature form(PMID:10639150). It can exist as a dimer(PMID:17142755).

Storage

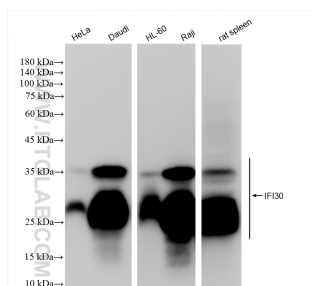
Storage:
Store at -20°C. Stable for one year after shipment.
Storage Buffer:
PBS with 0.02% sodium azide and 50% glycerol, pH7.3
Aliquoting is unnecessary for -20°C storage

*** 20ul sizes contain 0.1% BSA

For technical support and original validation data for this product please contact:
T: 1 (888) 4PTGLAB (1-888-478-4522) (toll free in USA), or 1(312) 455-8498 (outside USA)
E: proteintech@ptglab.com
W: ptglab.com

This product is exclusively available under Proteintech Group brand and is not available to purchase from any other manufacturer.

Selected Validation Data



Various lysates were subjected to SDS PAGE followed by western blot with 85982-1-RR (IFI30 antibody) at dilution of 1:10000 incubated at room temperature for 1.5 hours.