

For Research Use Only

Mouse Surfactant protein D Recombinant antibody, PBS Only (Capture)

Catalog Number: 85985-1-PBS



Basic Information

Catalog Number: 85985-1-PBS	GenBank Accession Number: NM_009160.2	Purification Method: Protein A purification
Size: 100ug , Concentration: 1 mg/ml by Nanodrop;	GeneID (NCBI): 20390	CloneNo.: 250571G8
Source: Rabbit	UNIPROT ID: P50404	
Isotype: IgG	Full Name: surfactant associated protein D	
Immunogen Catalog Number: EG2924	Calculated MW: 38 kDa	
	Observed MW: 40 kDa	

Applications

Tested Applications:
WB, IHC, IP, Sandwich ELISA, Indirect ELISA, Sample test

Species Specificity:
mouse, rat

Product Information

85985-1-PBS targets Surfactant protein D as part of a matched antibody pair:

MP02322-1: 85985-1-PBS capture and 85985-2-PBS detection (validated in Sandwich ELISA)

Unconjugated rabbit recombinant monoclonal antibody in PBS only (BSA and azide free) storage buffer at a concentration of 1 mg/mL, ready for conjugation. Created using Proteintech's proprietary in-house recombinant technology. Recombinant production enables unrivalled batch-to-batch consistency, easy scale-up, and future security of supply.

This conjugation ready format makes antibodies ideal for use in many applications including: ELISAs, multiplex assays requiring matched pairs, mass cytometry, and multiplex imaging applications. Antibody use should be optimized by the end user for each application and assay.

Background Information

Surfactant protein D (SP-D) is a pattern recognition molecule of the collectin family of C-type lectins, which consist of four structural domains: a cysteine-rich N-terminal domain, a collagen-like region, an alpha-helical coiled-coil neck domain and a C-terminal lectin or carbohydrate-recognition domain (PMID: 16213021; 15030473). SP-D is primarily expressed and secreted by type II alveolar cells (PMID: 16684127). It plays a central role in the pulmonary host defence and the modulation of allergic responses.

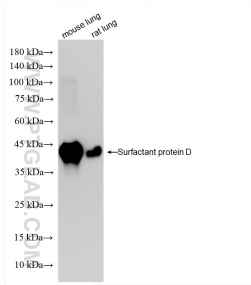
Storage

Storage:
Store at -80°C.
Storage Buffer:
PBS only, pH7.3

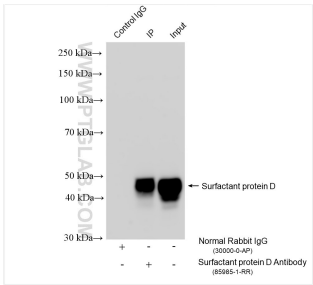
For technical support and original validation data for this product please contact:
T: 1 (888) 4PTGLAB (1-888-478-4522) (toll free in USA), or 1(312) 455-8498 (outside USA)
E: proteintech@ptglab.com
W: ptglab.com

This product is exclusively available under Proteintech Group brand and is not available to purchase from any other manufacturer.

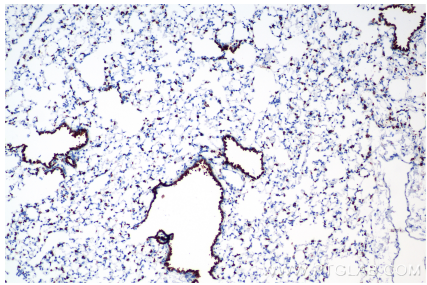
Selected Validation Data



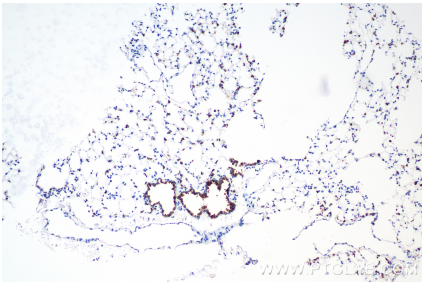
Various lysates were subjected to SDS PAGE followed by western blot with 85985-1-RR (Sftpd antibody) at dilution of 1:10000 incubated at room temperature for 1.5 hours. This data was developed using the same antibody clone with 85985-1-PBS in a different storage buffer formulation.



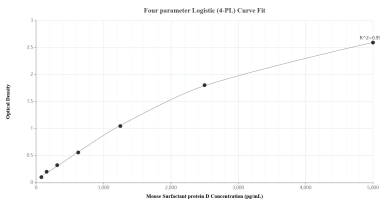
IP result of anti-Surfactant protein D (IP:85985-1-RR, 4ug; Detection:85985-1-RR 1:3000) with mouse lung tissue lysate 1760 ug. This data was developed using the same antibody clone with 85985-1-PBS in a different storage buffer formulation.



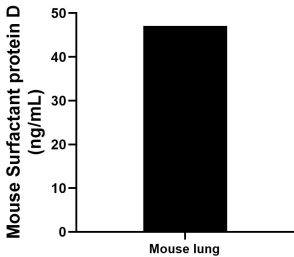
Immunohistochemical analysis of paraffin-embedded rat lung tissue slide using 85985-1-RR (Surfactant protein D antibody) at dilution of 1:800 (under 10x lens). Heat mediated antigen retrieval with Tris-EDTA buffer (pH 9.0). This data was developed using the same antibody clone with 85985-1-PBS in a different storage buffer formulation.



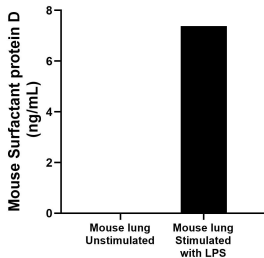
Immunohistochemical analysis of paraffin-embedded mouse lung tissue slide using 85985-1-RR (Surfactant protein D antibody) at dilution of 1:800 (under 10x lens). Heat mediated antigen retrieval with Tris-EDTA buffer (pH 9.0). This data was developed using the same antibody clone with 85985-1-PBS in a different storage buffer formulation.



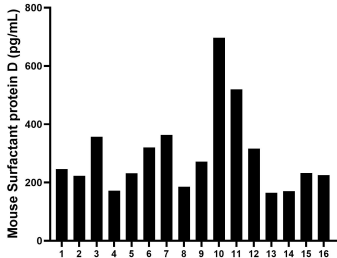
Sandwich ELISA standard curve of MP02322-1, Mouse Surfactant protein D Recombinant Matched Antibody Pair - PBS only. 85985-1-PBS was coated to a plate as the capture antibody and incubated with serial dilutions of standard Eg2924. 85985-2-PBS was HRP conjugated as the detection antibody. Range: 78.1-5000 pg/mL.



The mean Surfactant protein D concentration was determined to be 47.1 ng/mL in mouse lung tissue extract based on a 5.3 mg/mL extract load.



Mouse lung, cut into 1-2 mm pieces, was cultured unstimulated or stimulated with 1 µg/mL LPS for 3 days. The mean Surfactant protein D concentration was undetectable in unstimulated supernatant, 7.4 ng/mL in LPS stimulated supernatant.



Serum of sixteen mice was measured. The Surfactant protein D concentration of detected samples was determined to be 293.4 pg/mL with a range of 164.4-696.5 pg/mL.